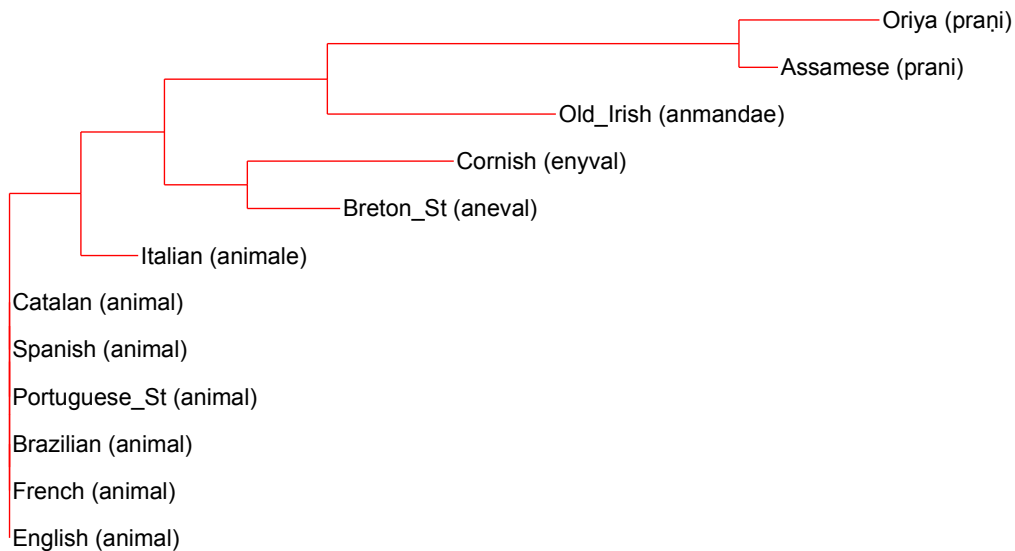
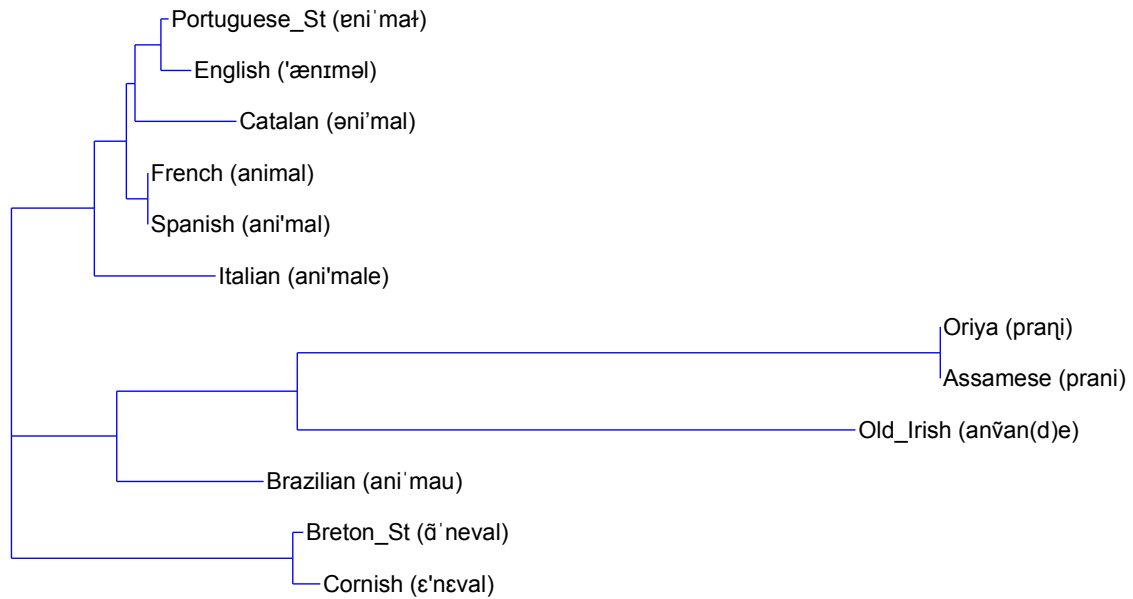
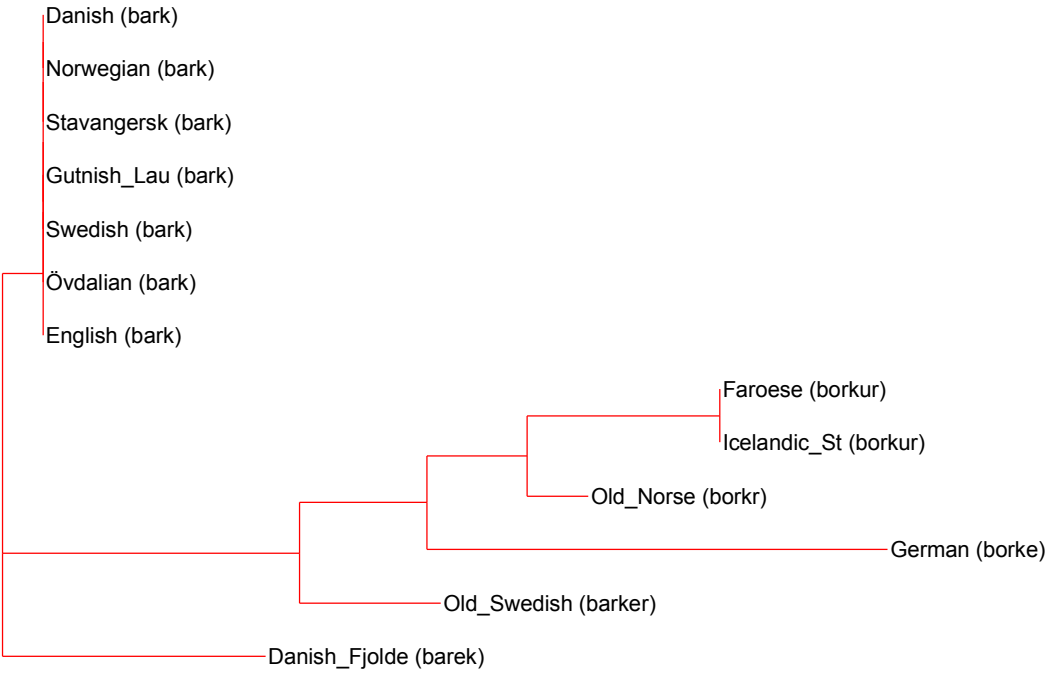
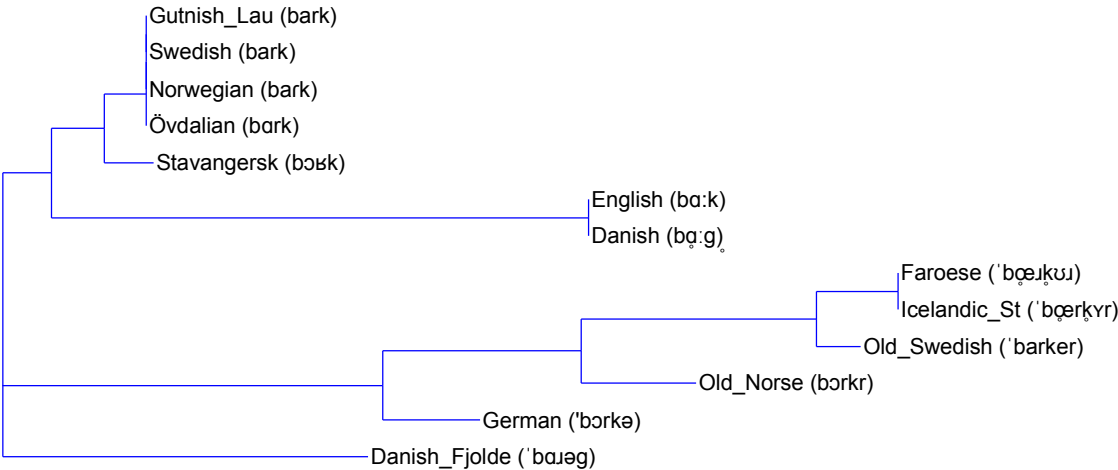


Phylogenetic trees obtained using the SCA phonetic distance (List, 2012) are in **blue** and using the normalized Levenshtein distance are in **red**. The Neighbor-Joining (Saitou et Nei, 1987) algorithm was applied to infer the trees from the distance matrices. All the data have been taken from the IELex database (<http://ielex.mpi.nl/>) (Dunn *et al.* 2011).

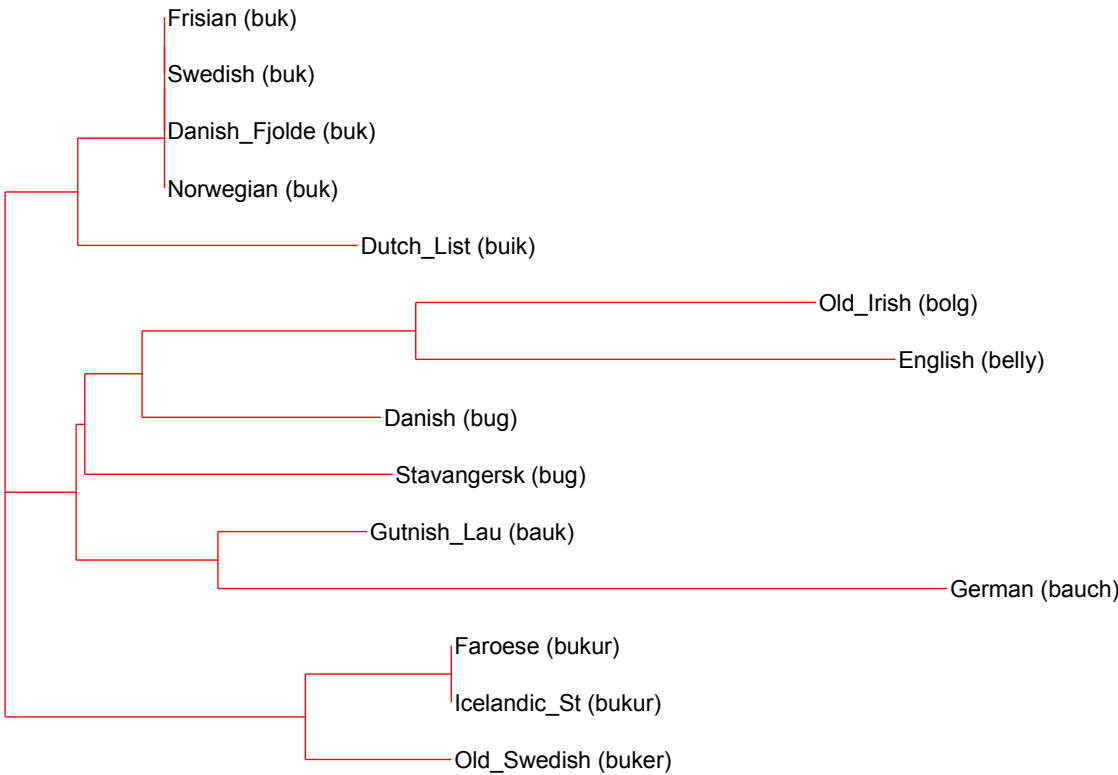
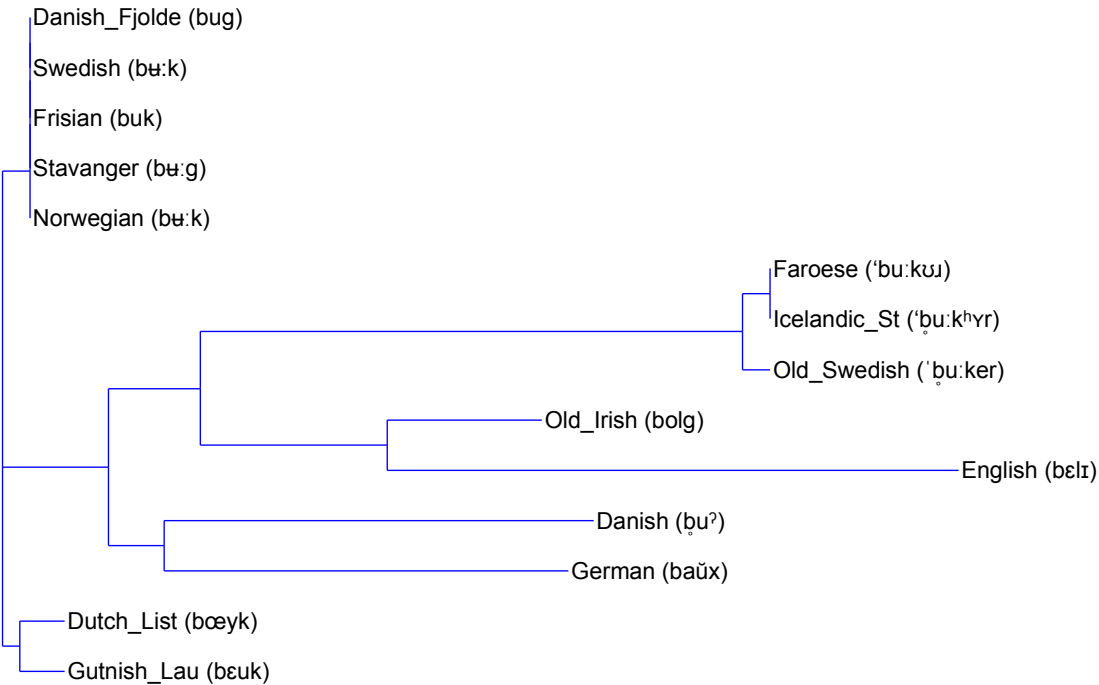
Animal



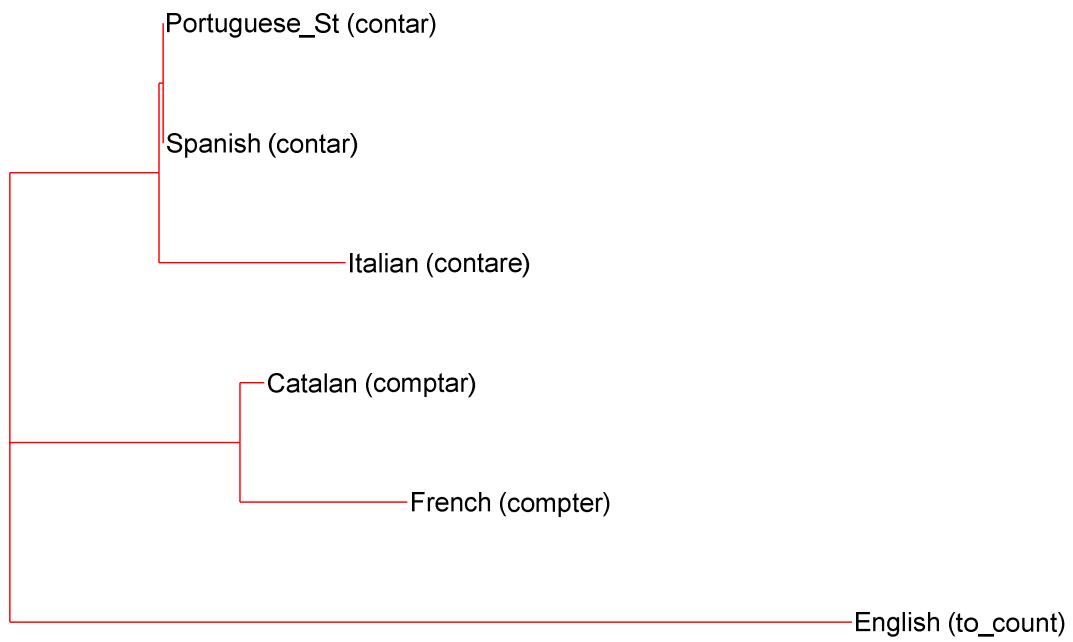
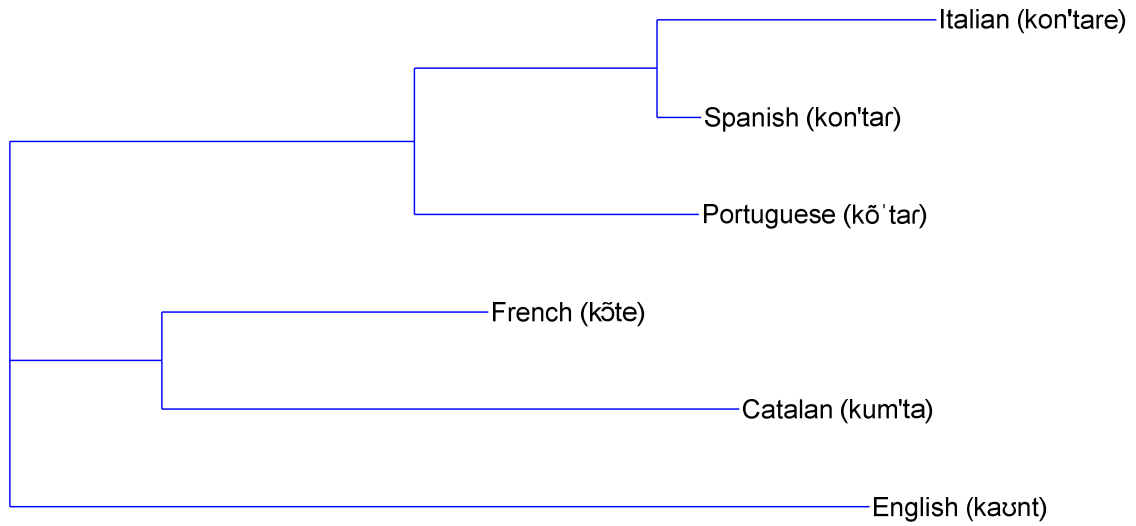
Bark



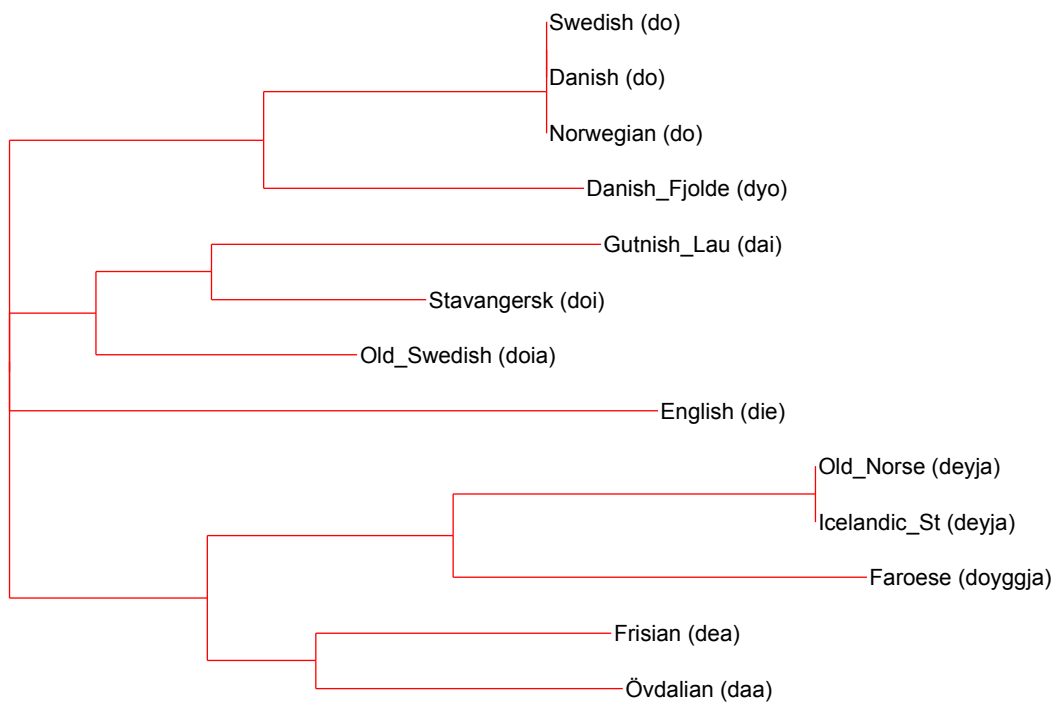
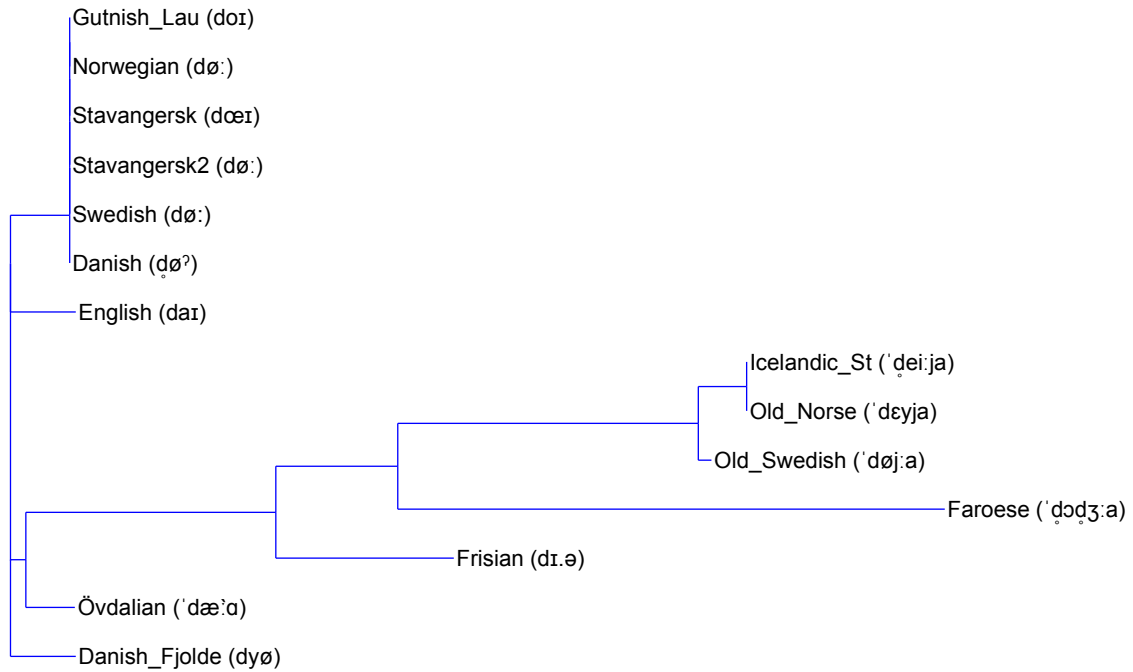
Belly



Count



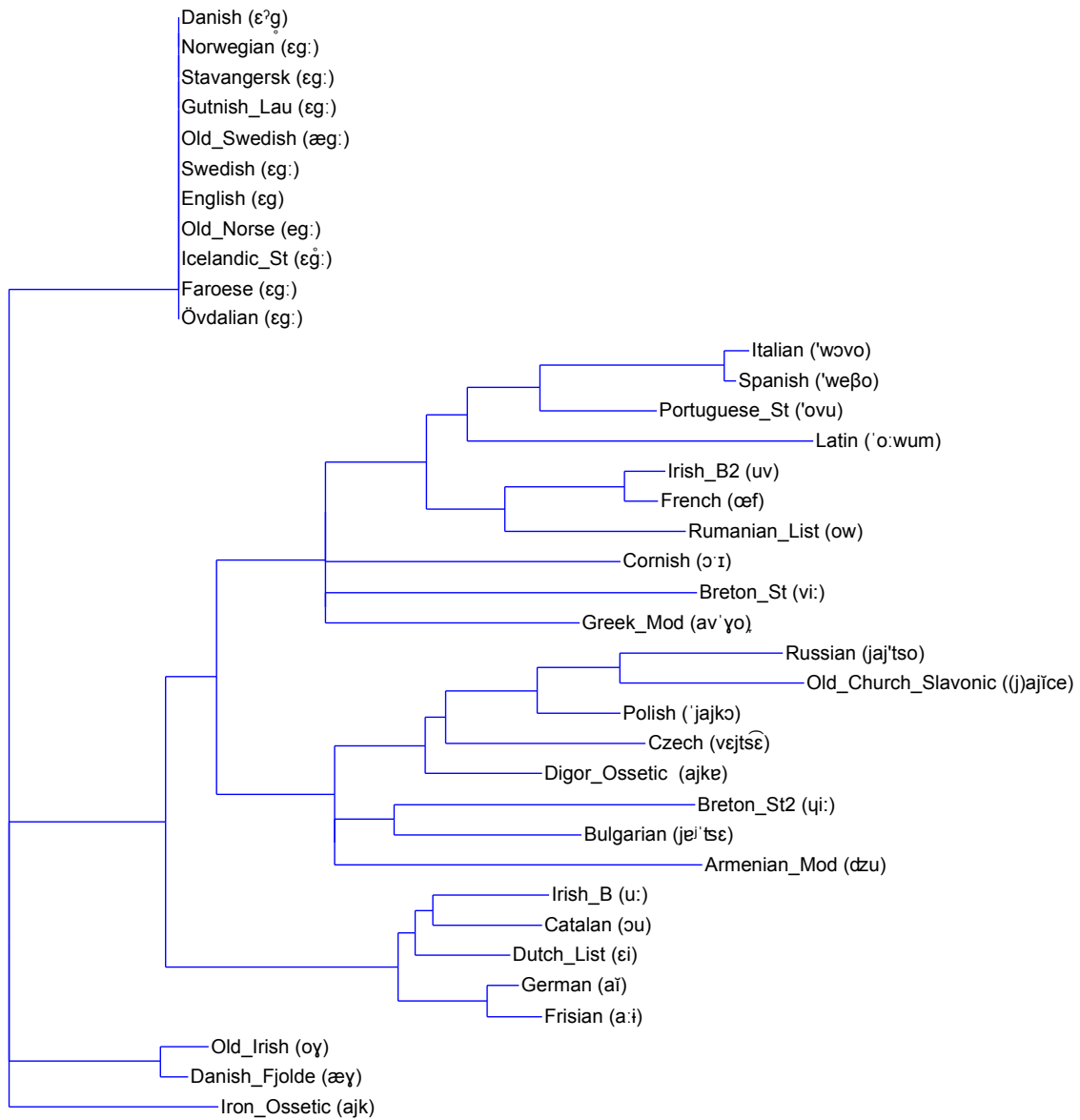
Die



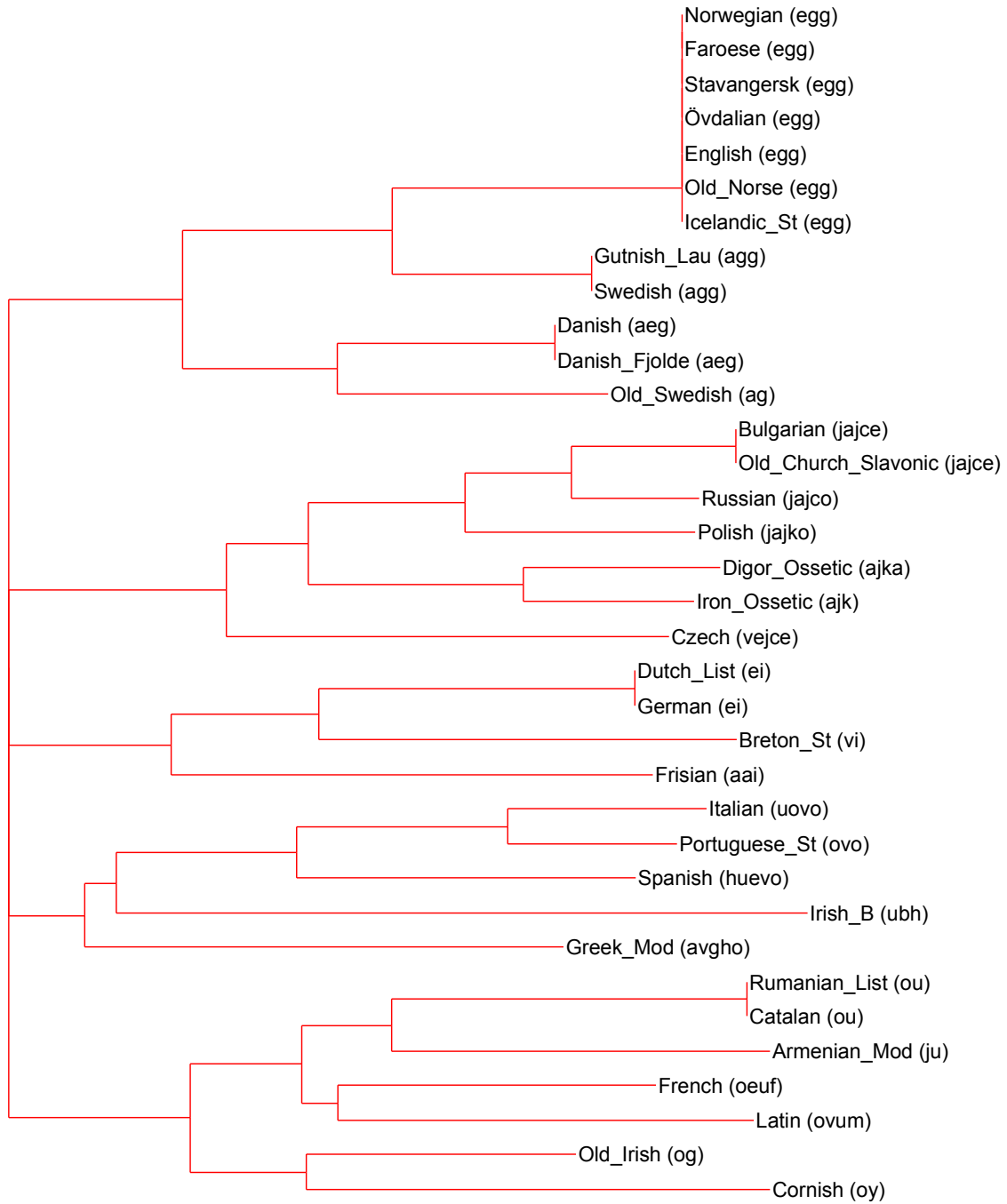
Dust



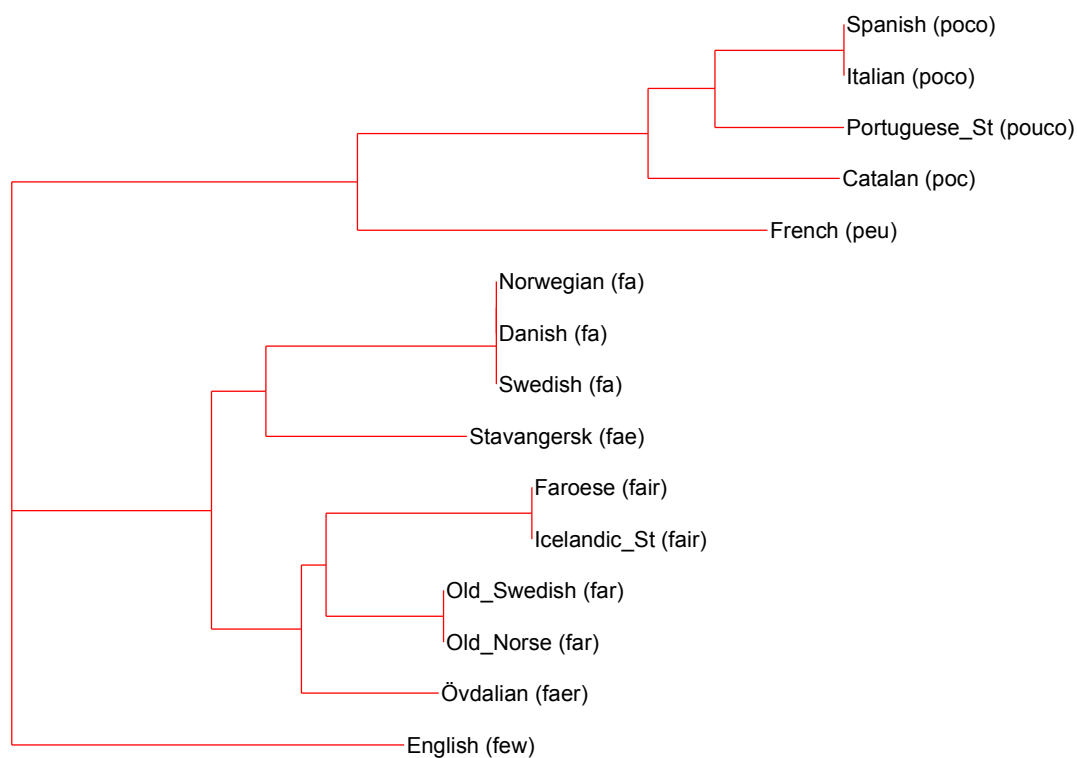
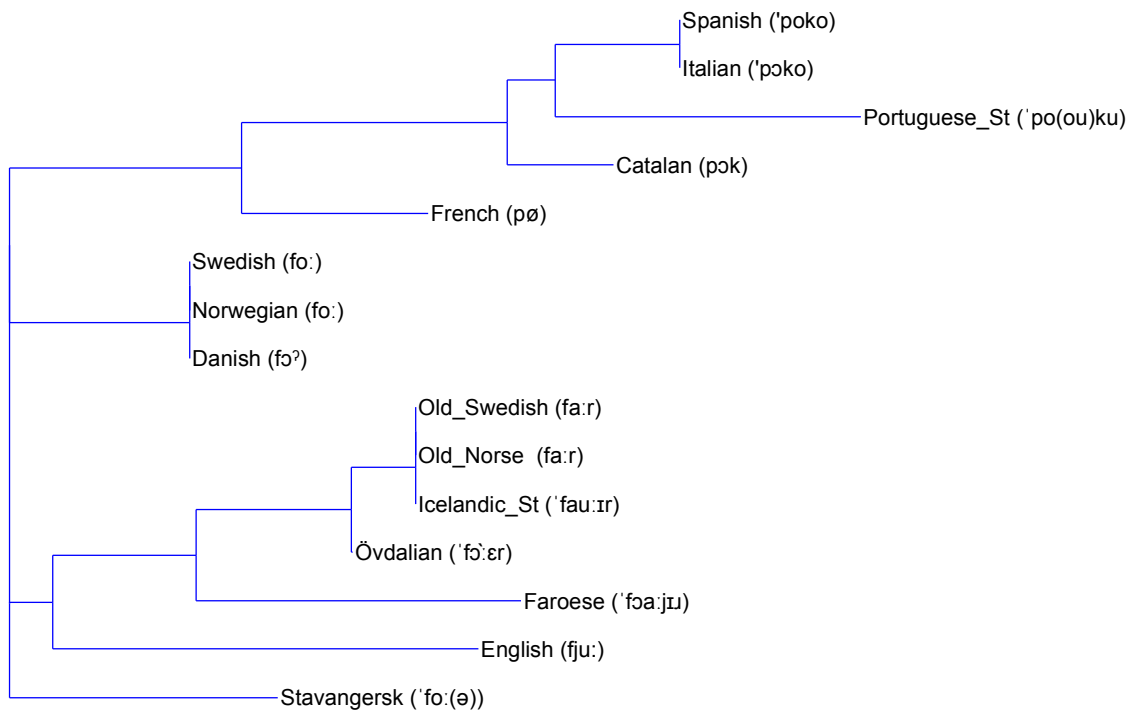
Egg



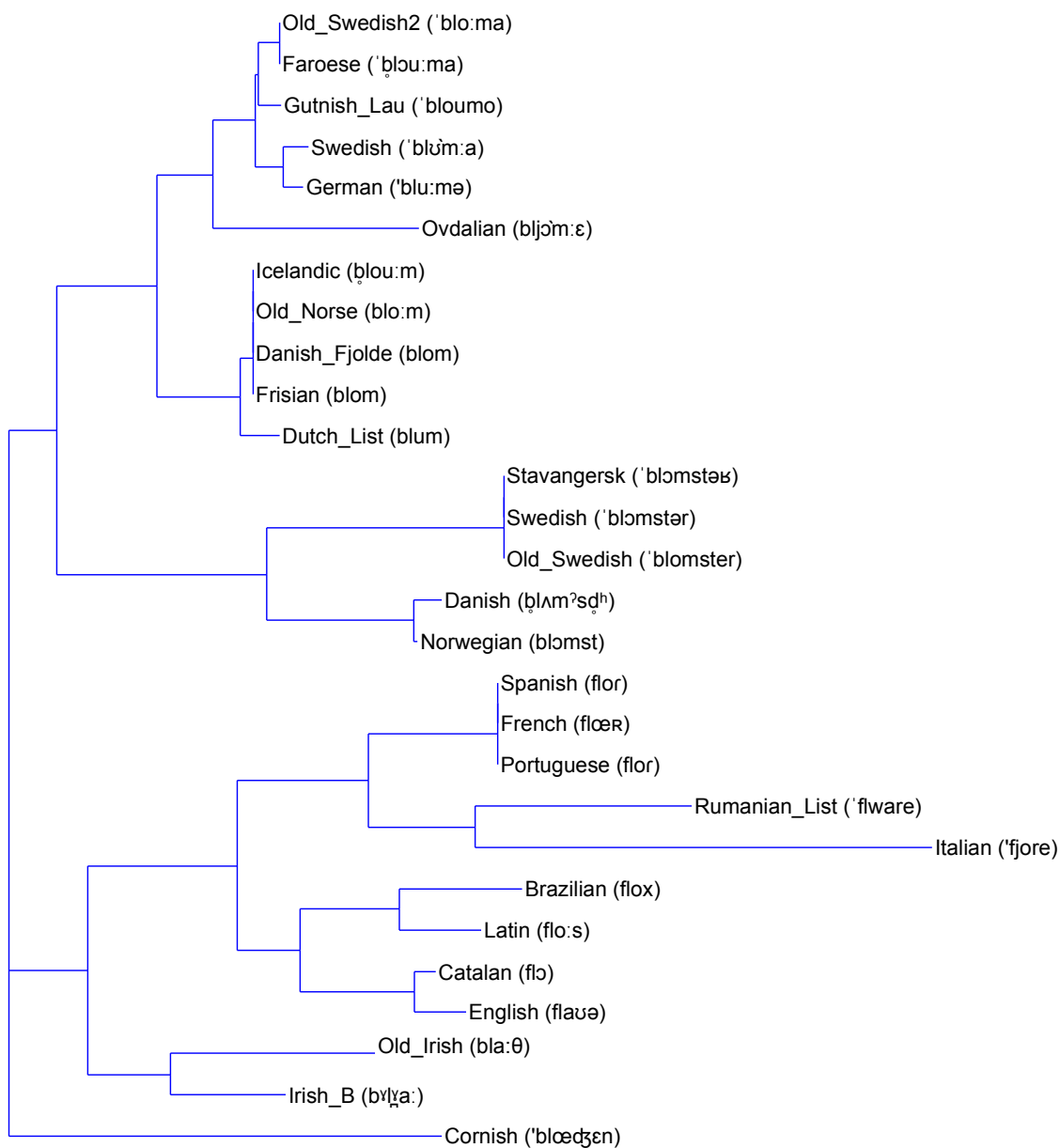
Egg



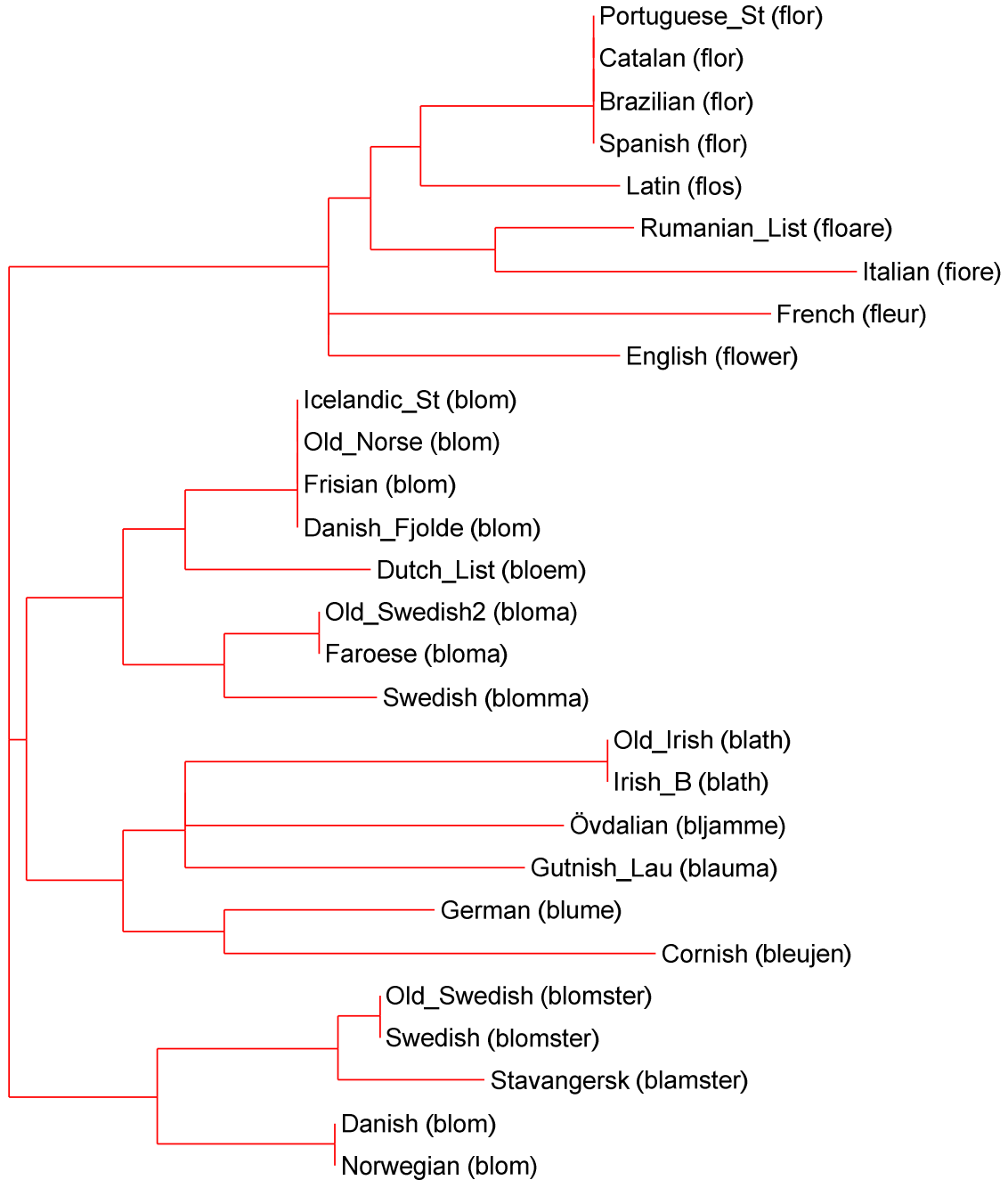
Few



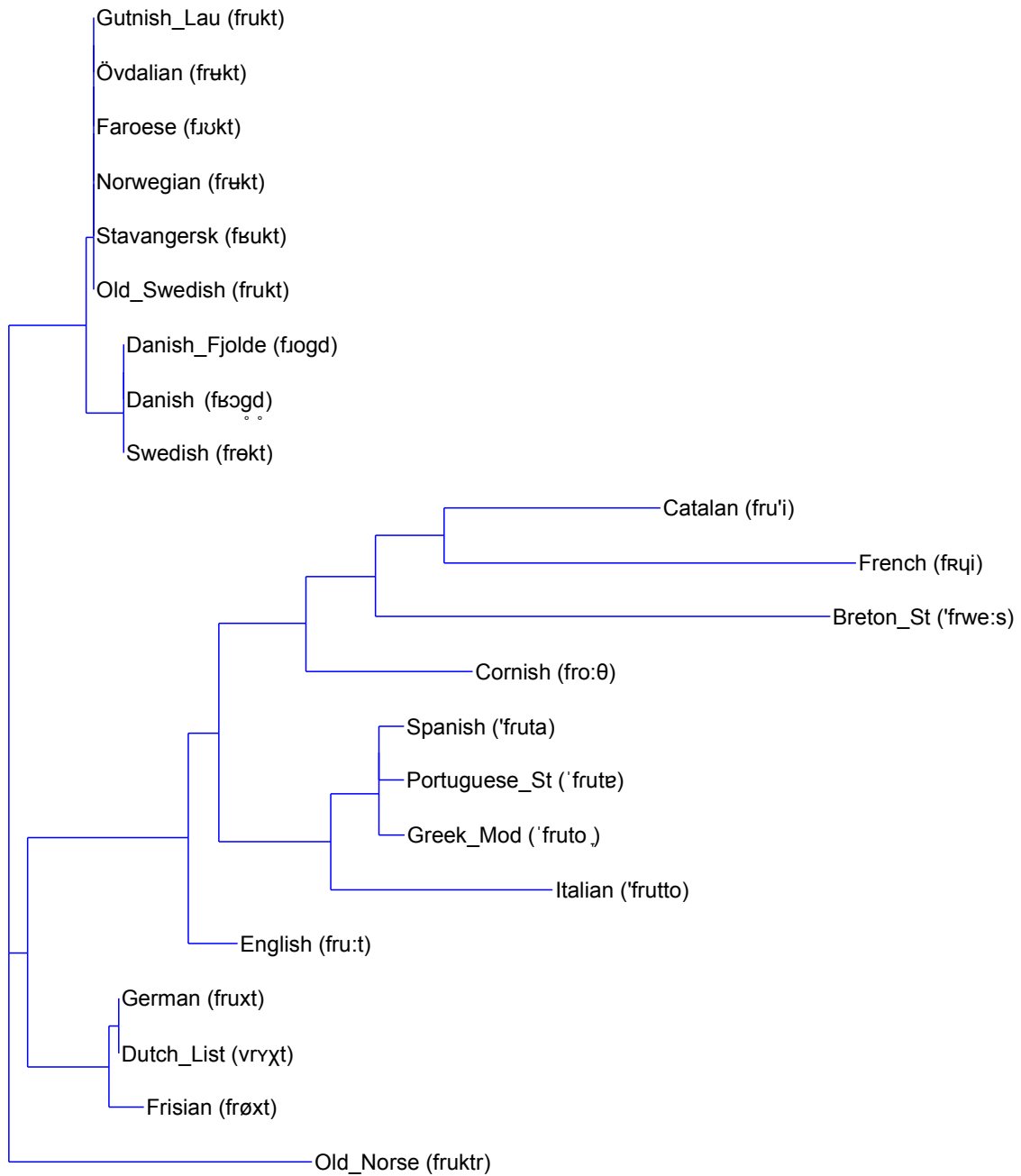
Flower



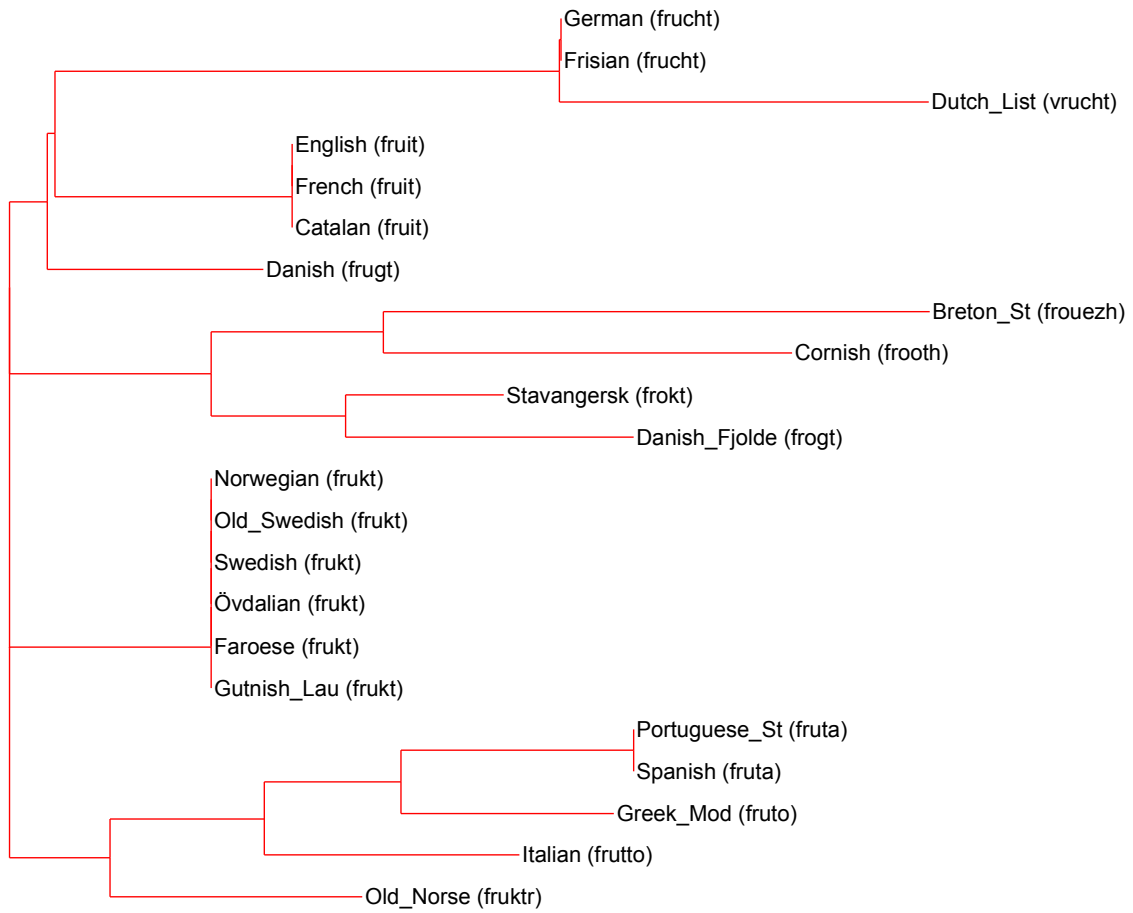
Flower



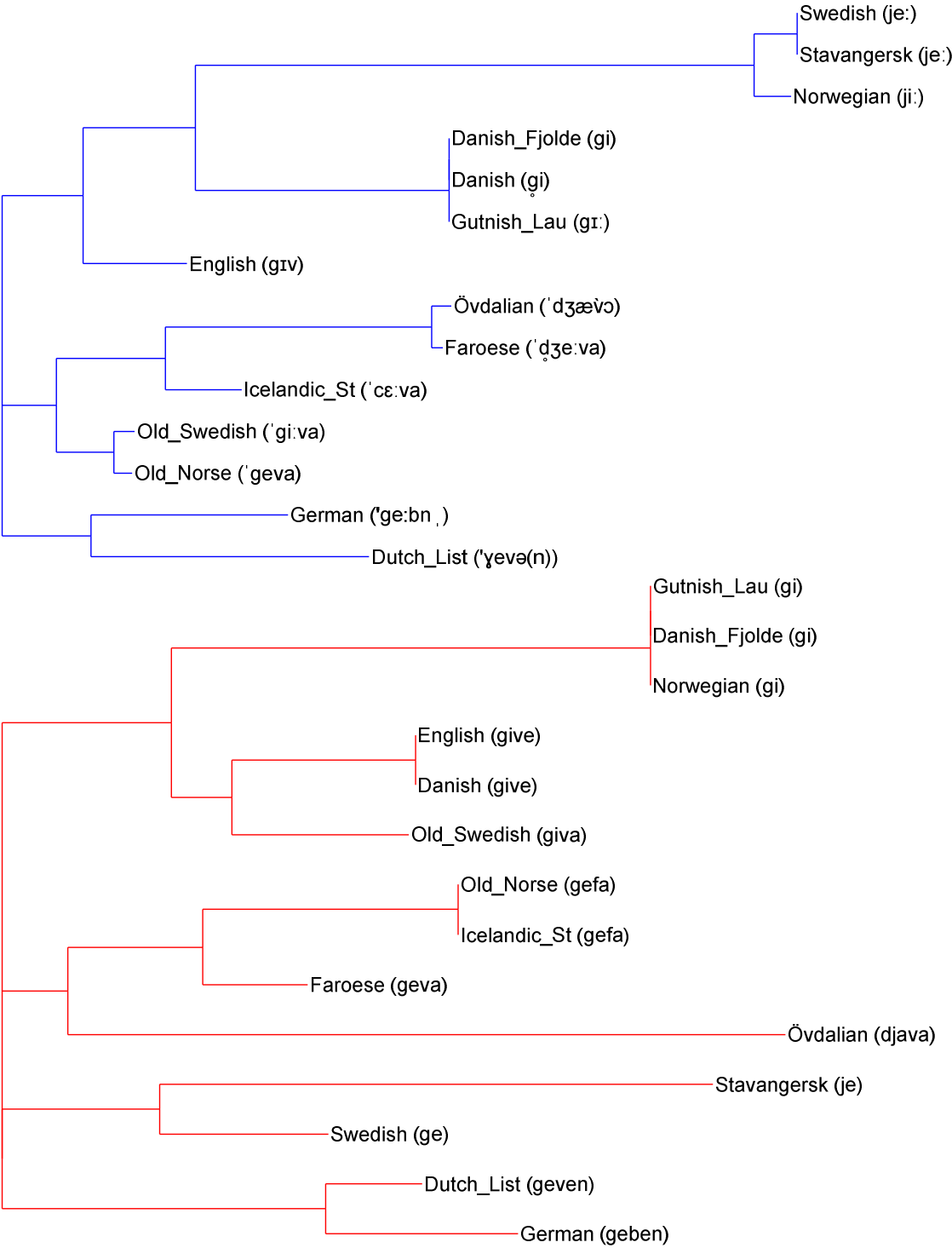
Fruit



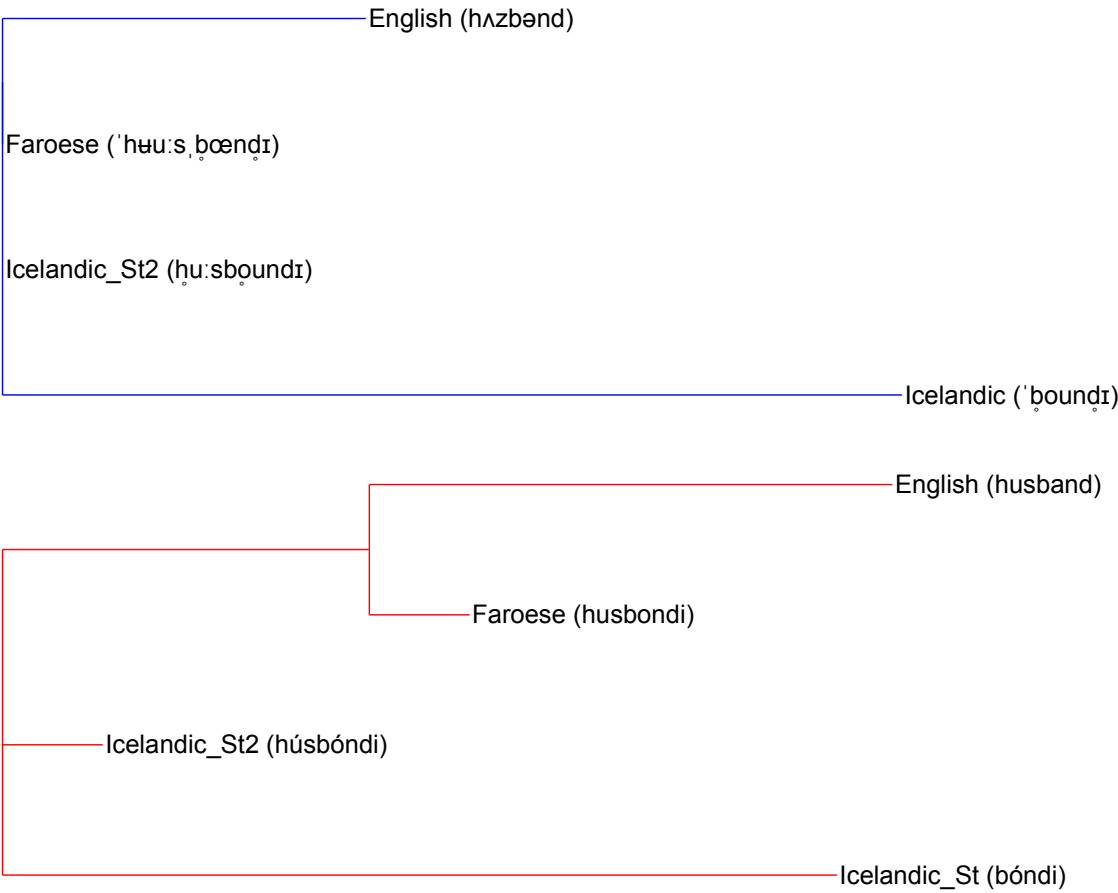
Fruit



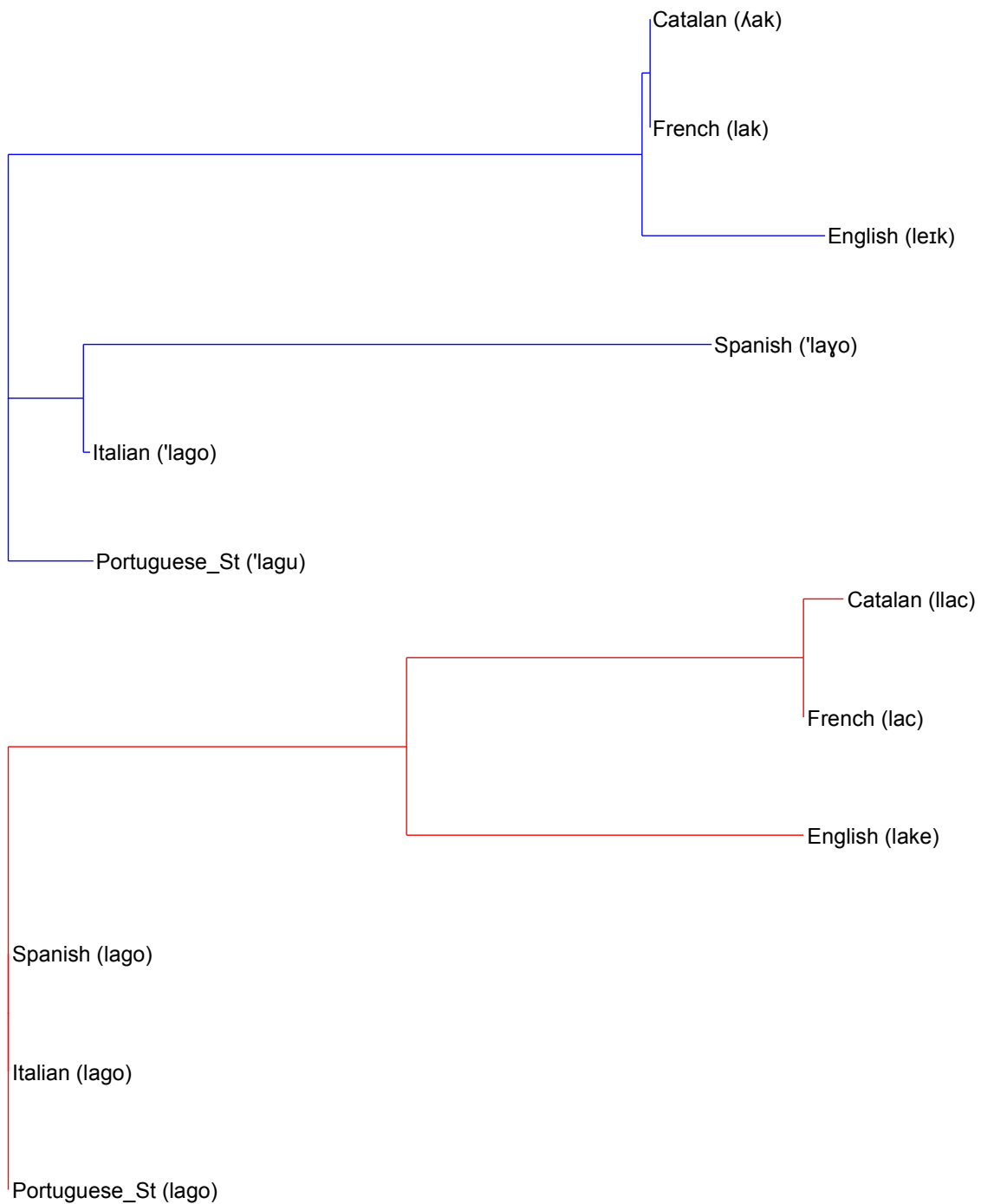
Give



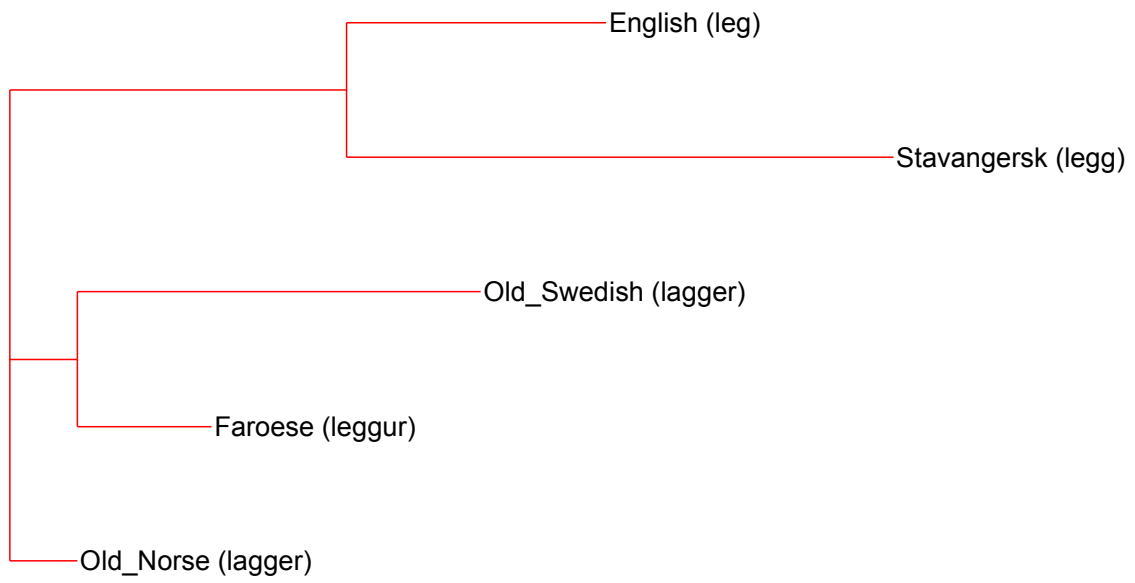
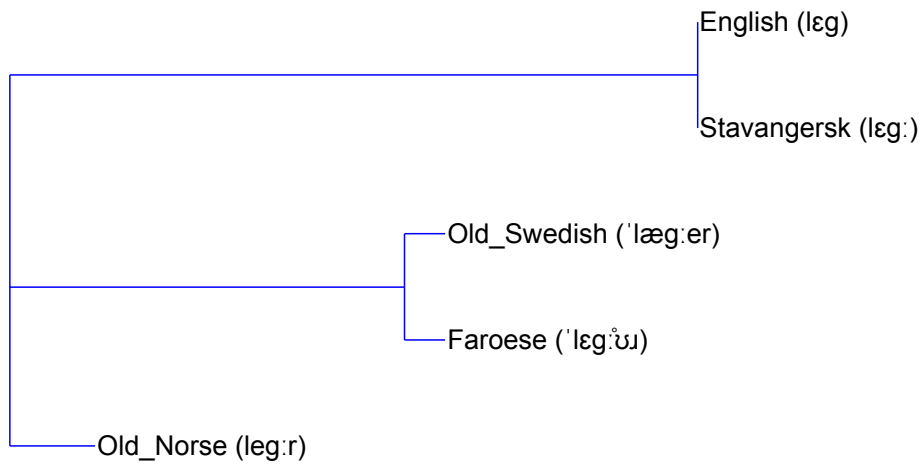
Husband



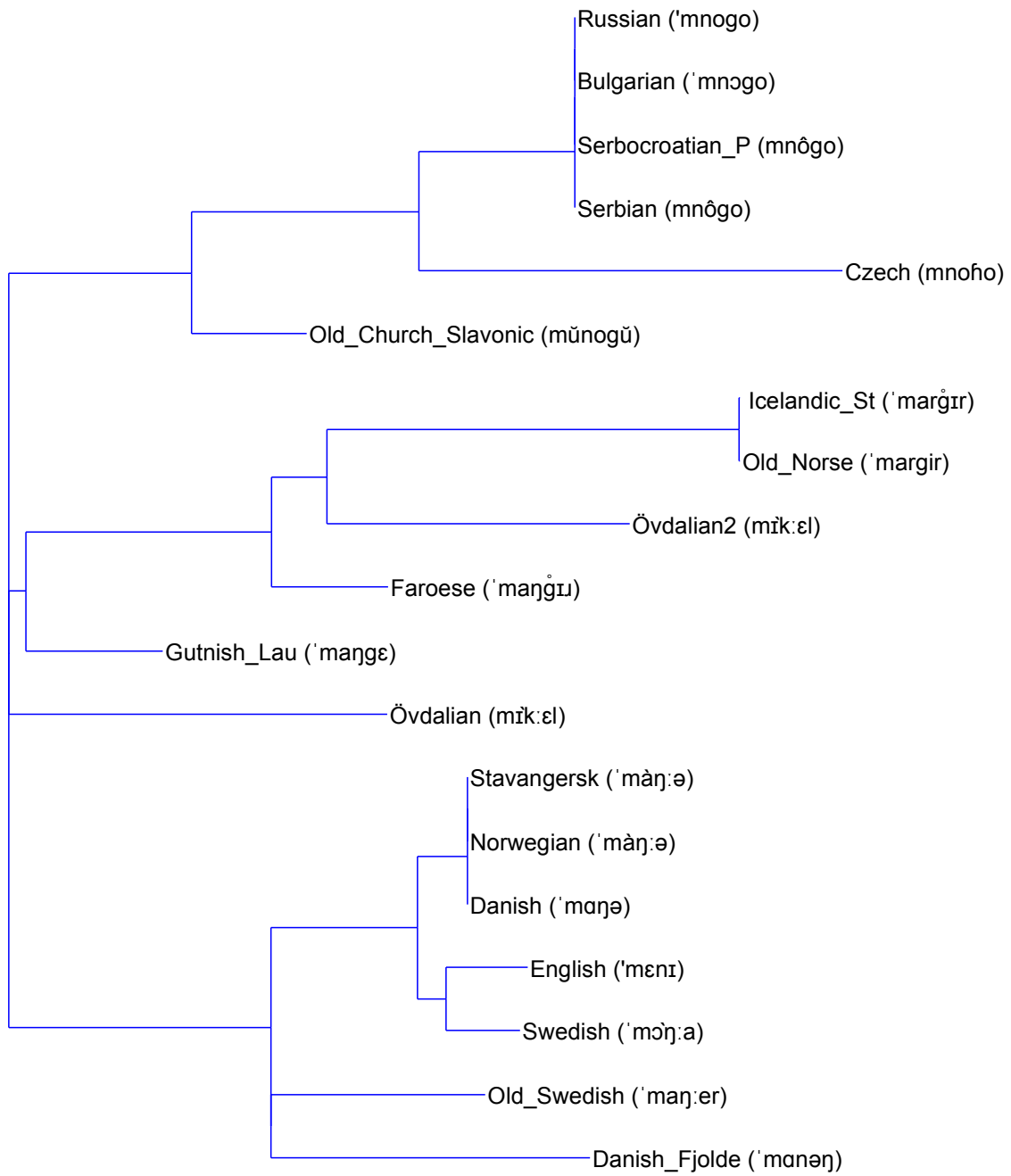
Lake



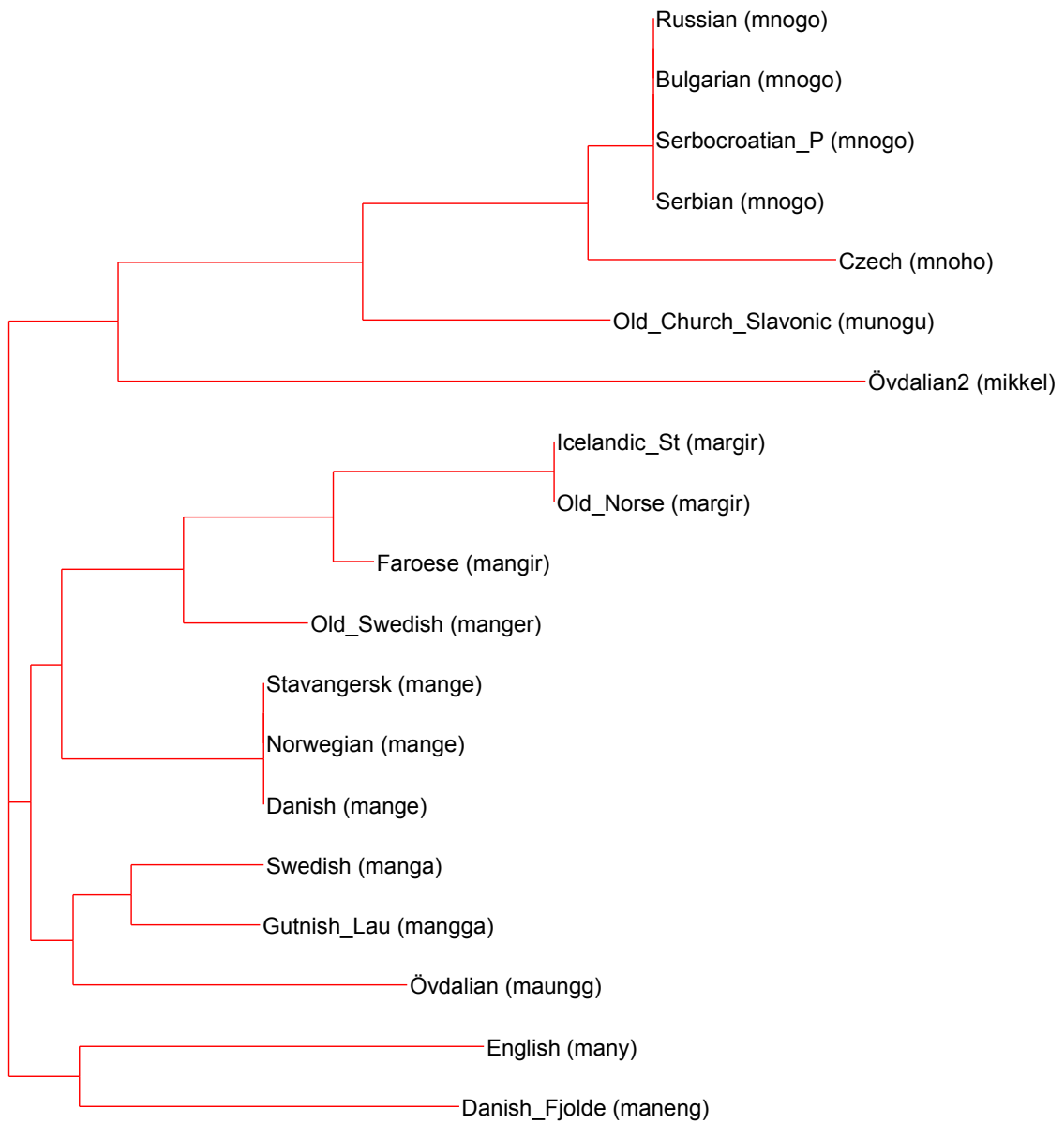
Leg



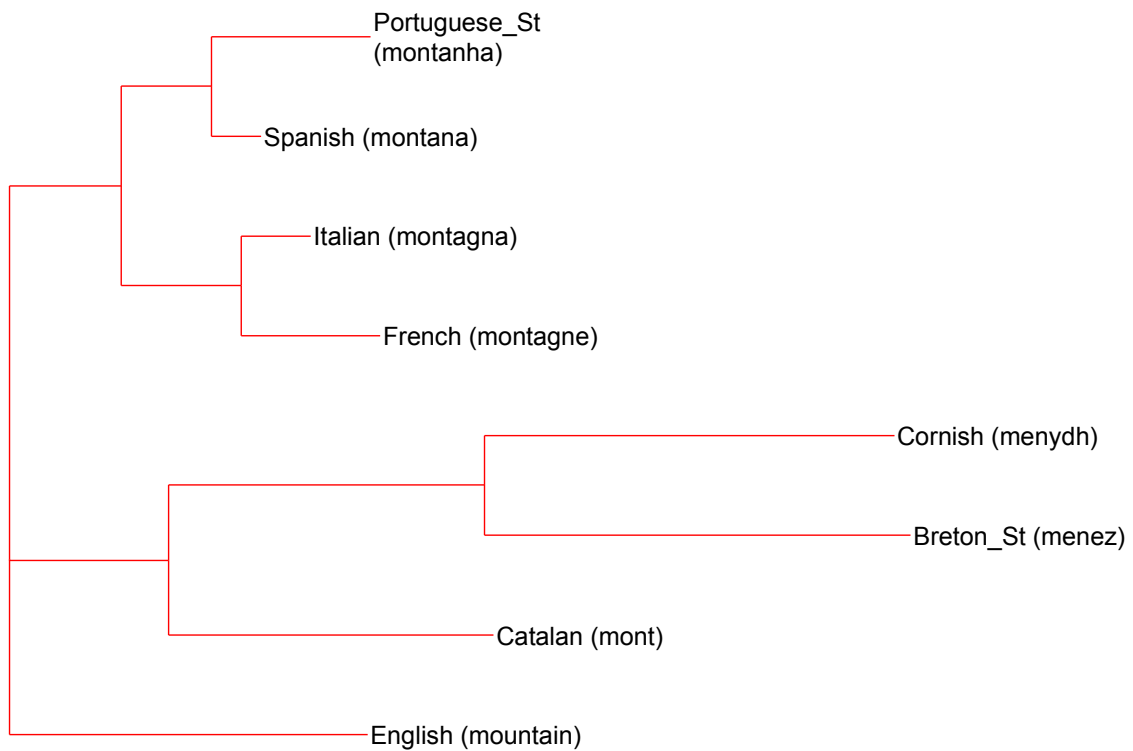
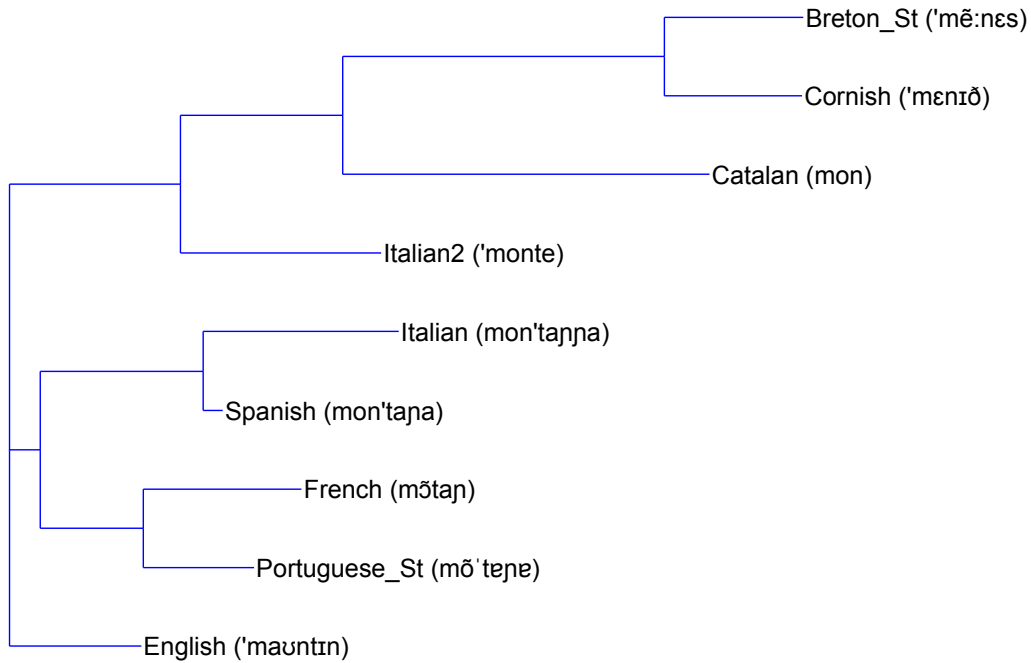
Many



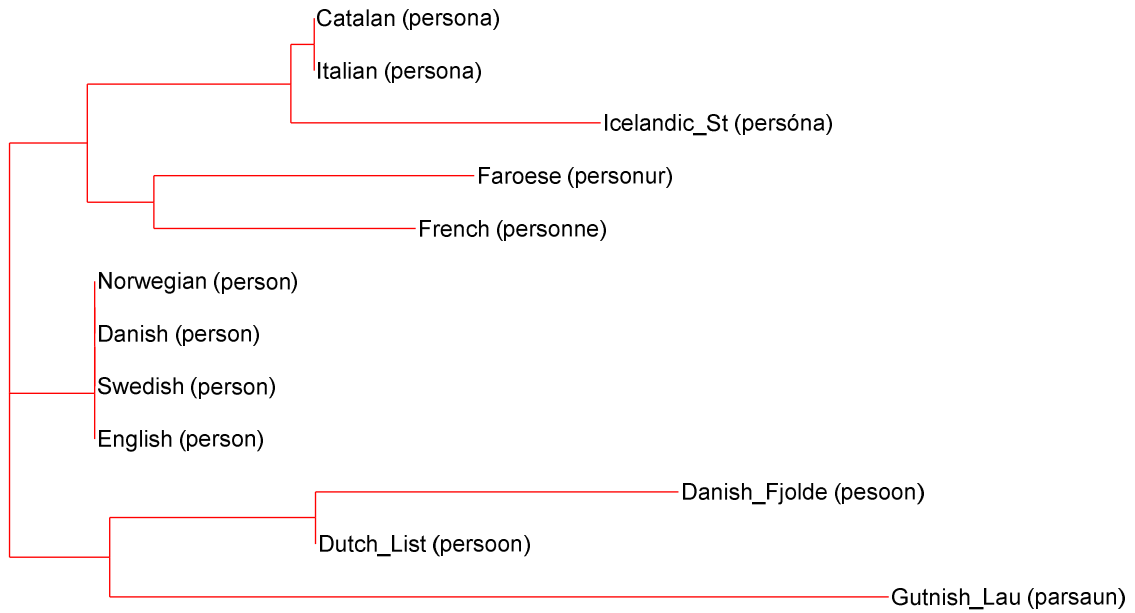
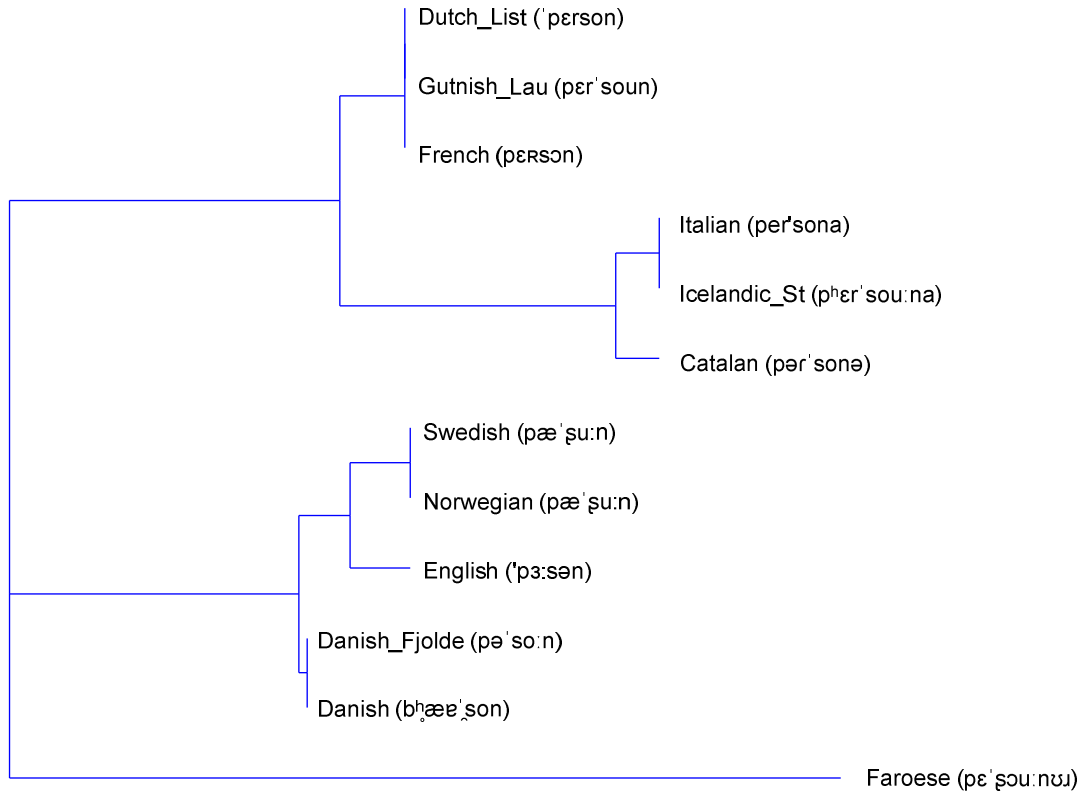
Many



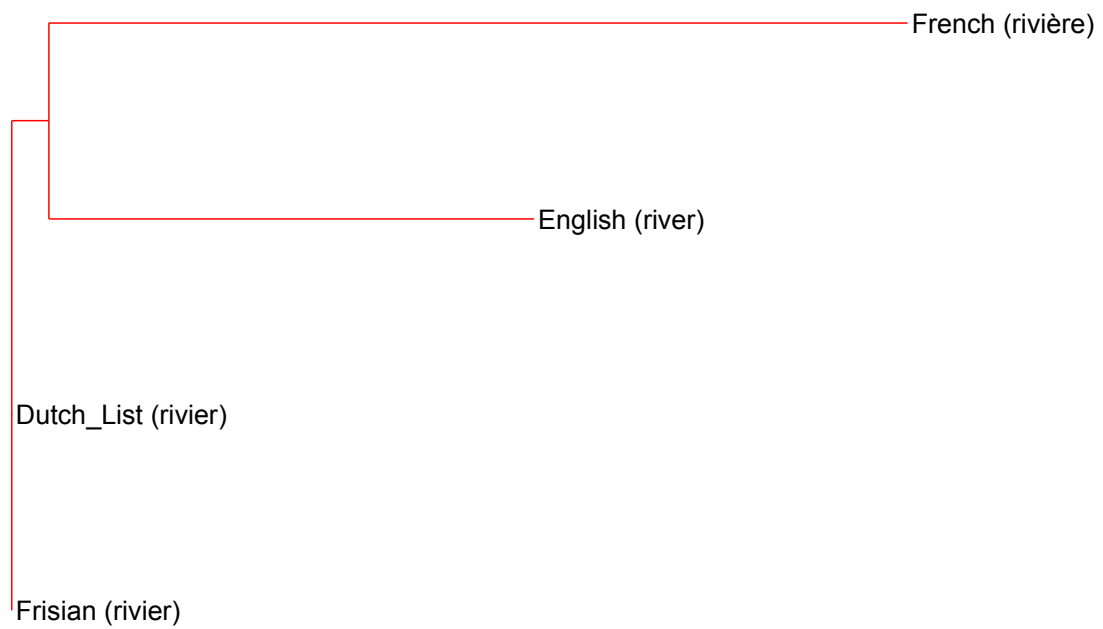
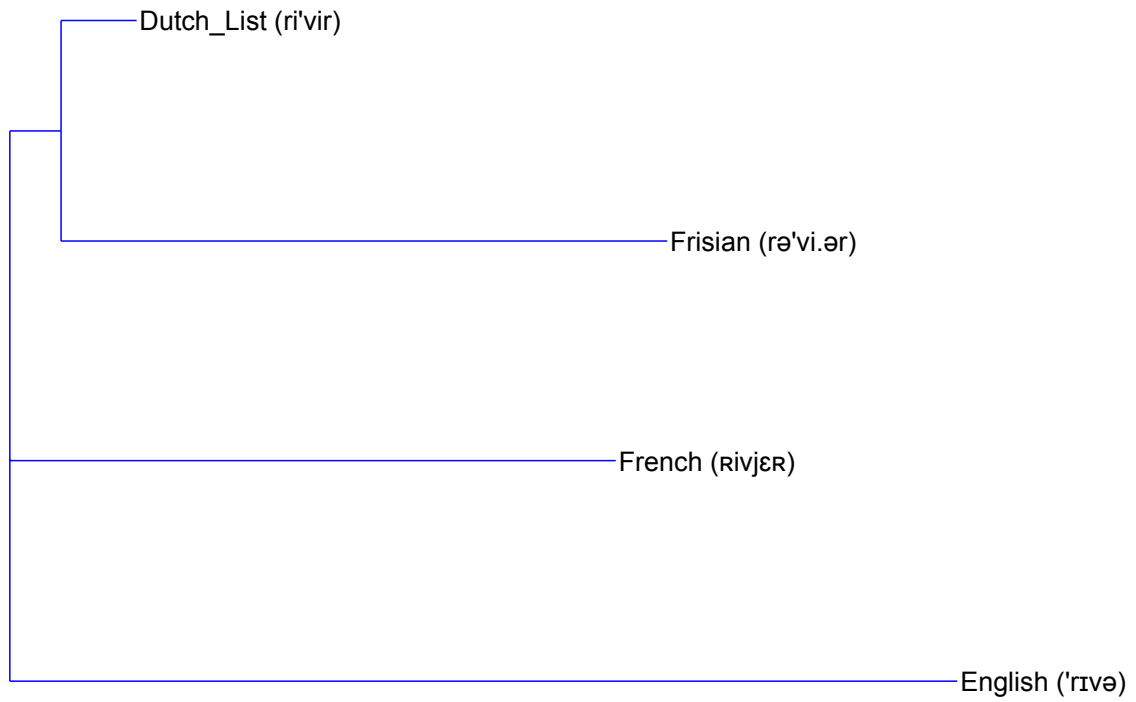
Mountain



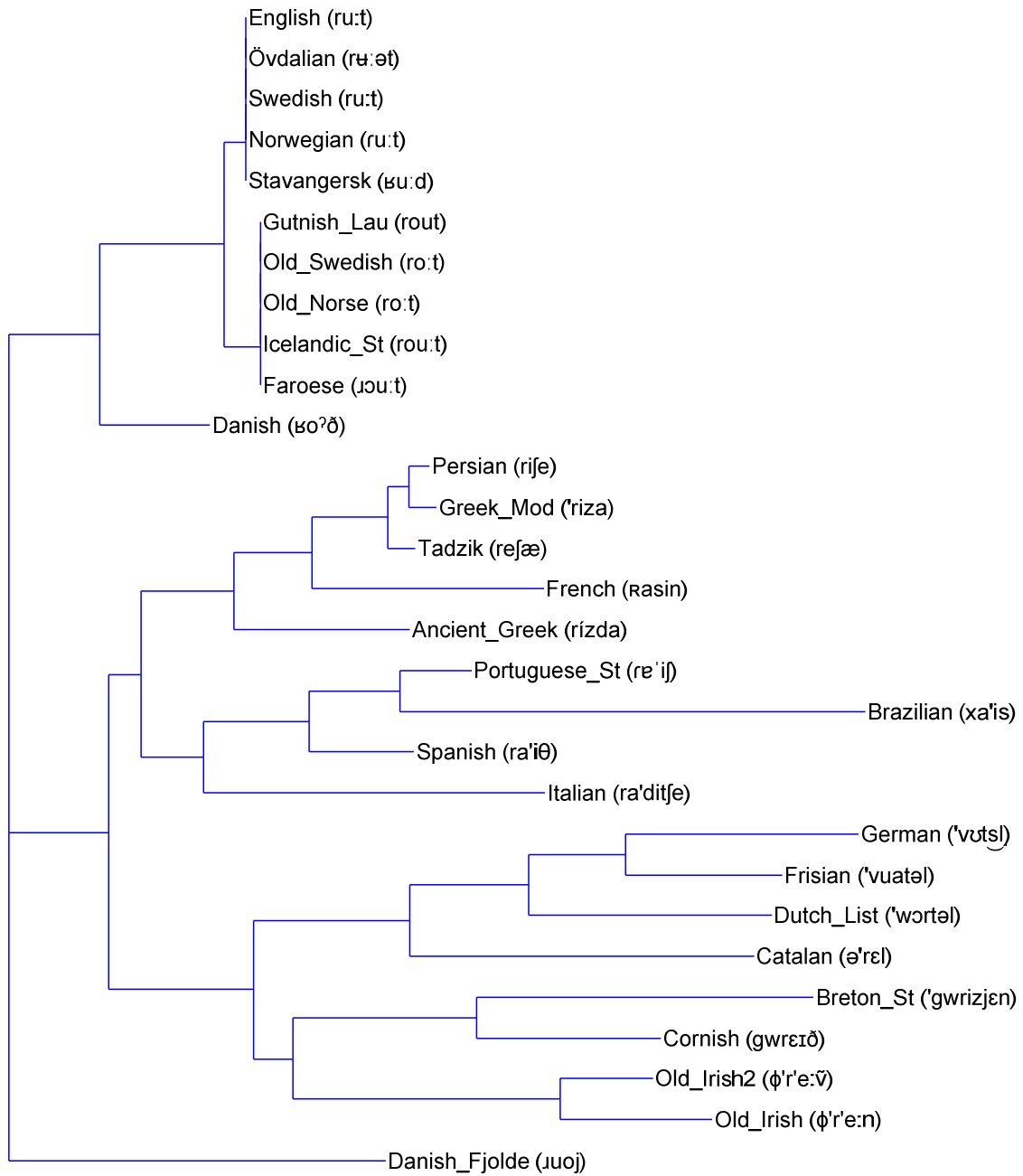
Person



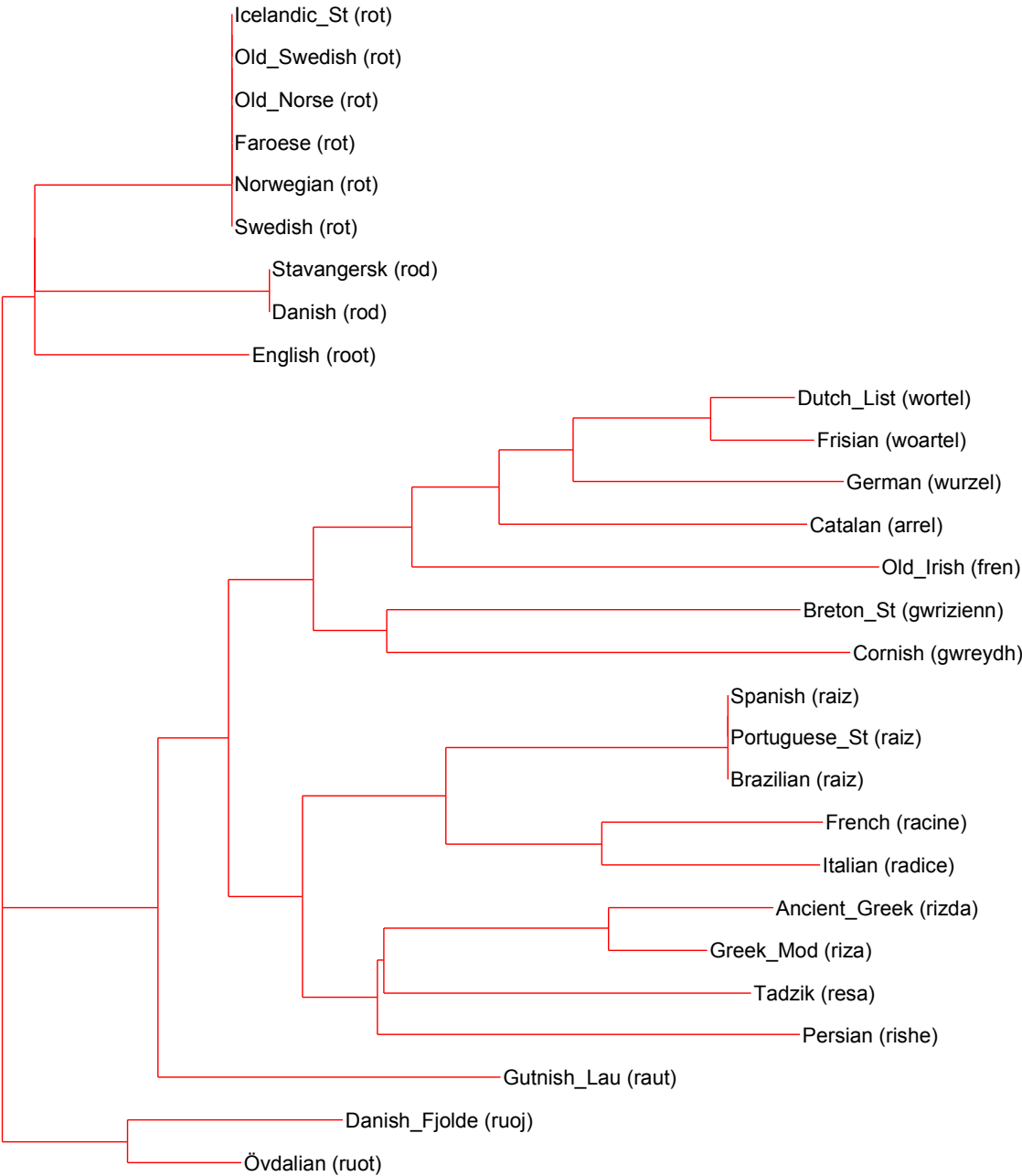
River



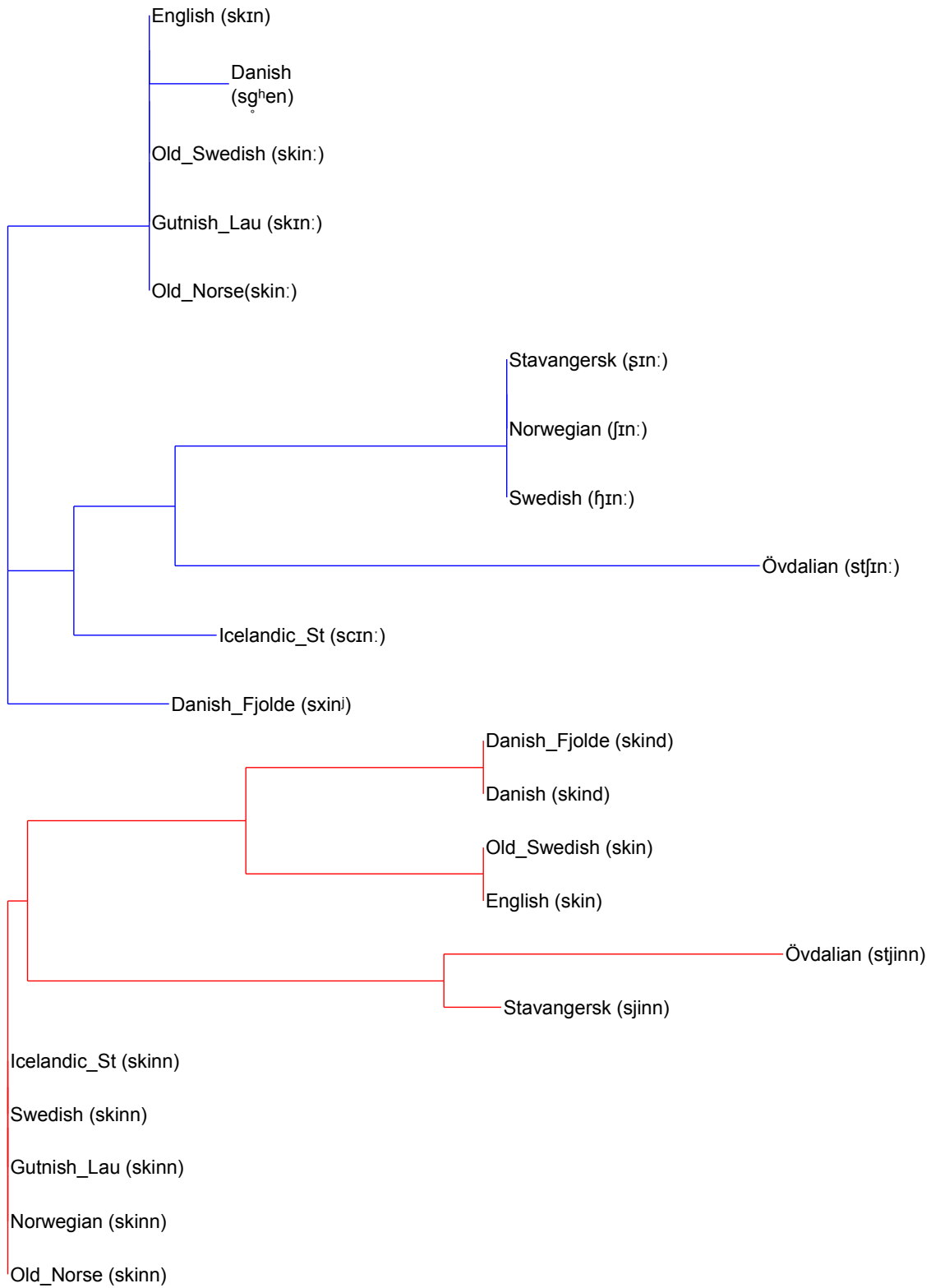
Root



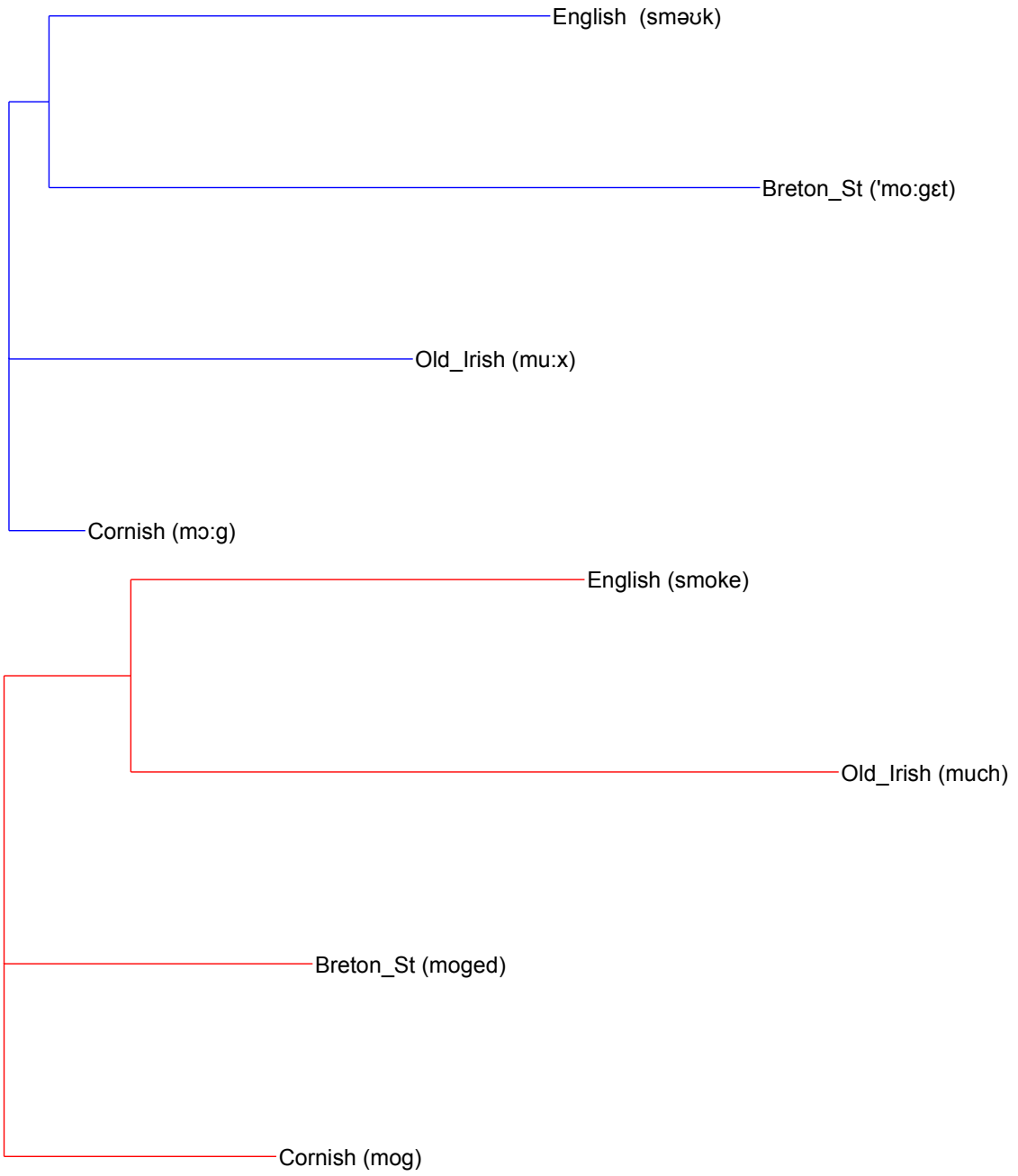
Root



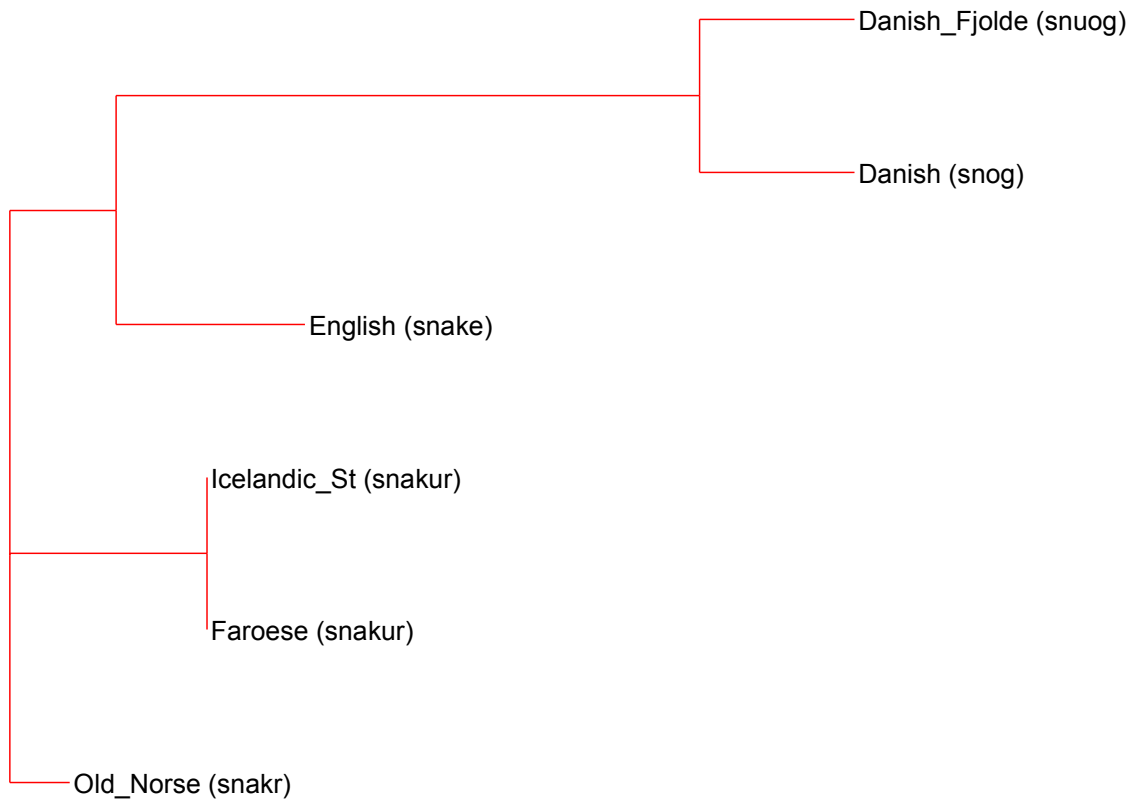
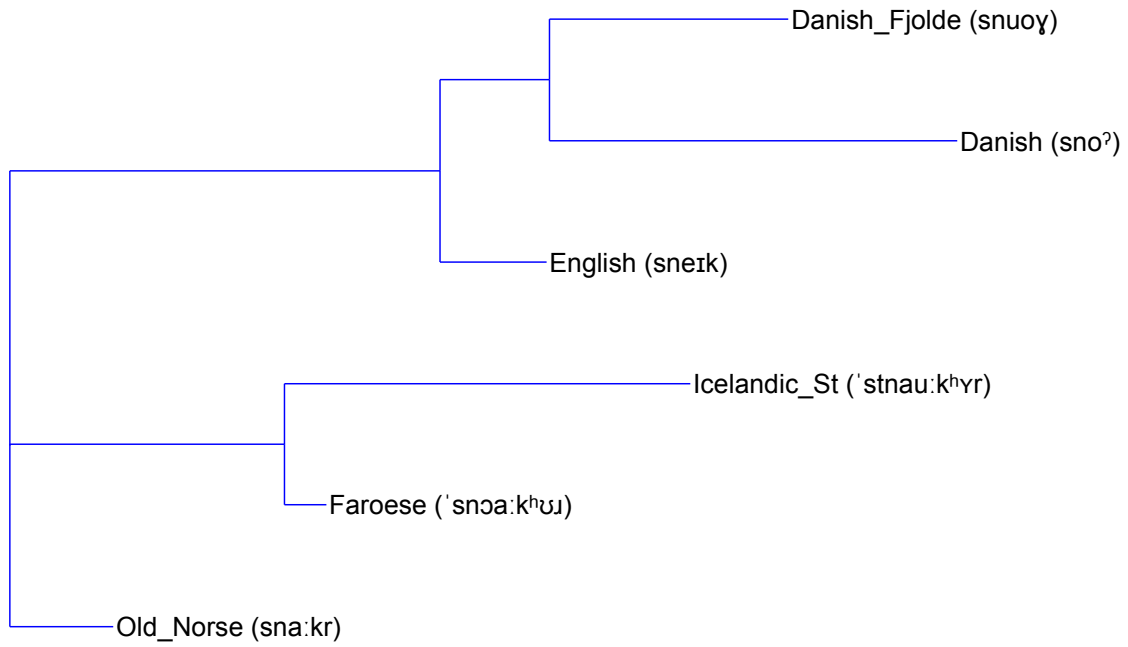
Skin



Smoke



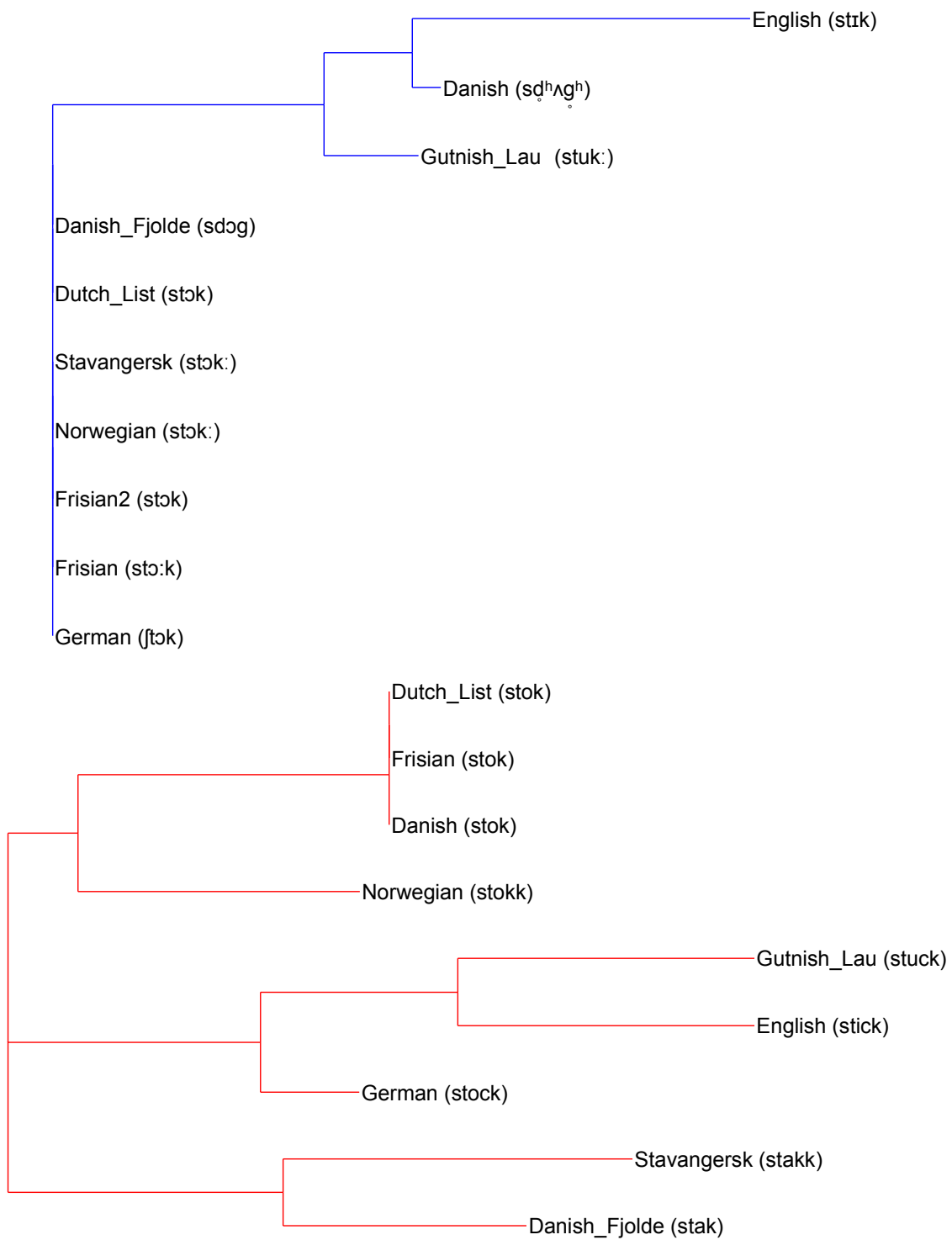
Snake



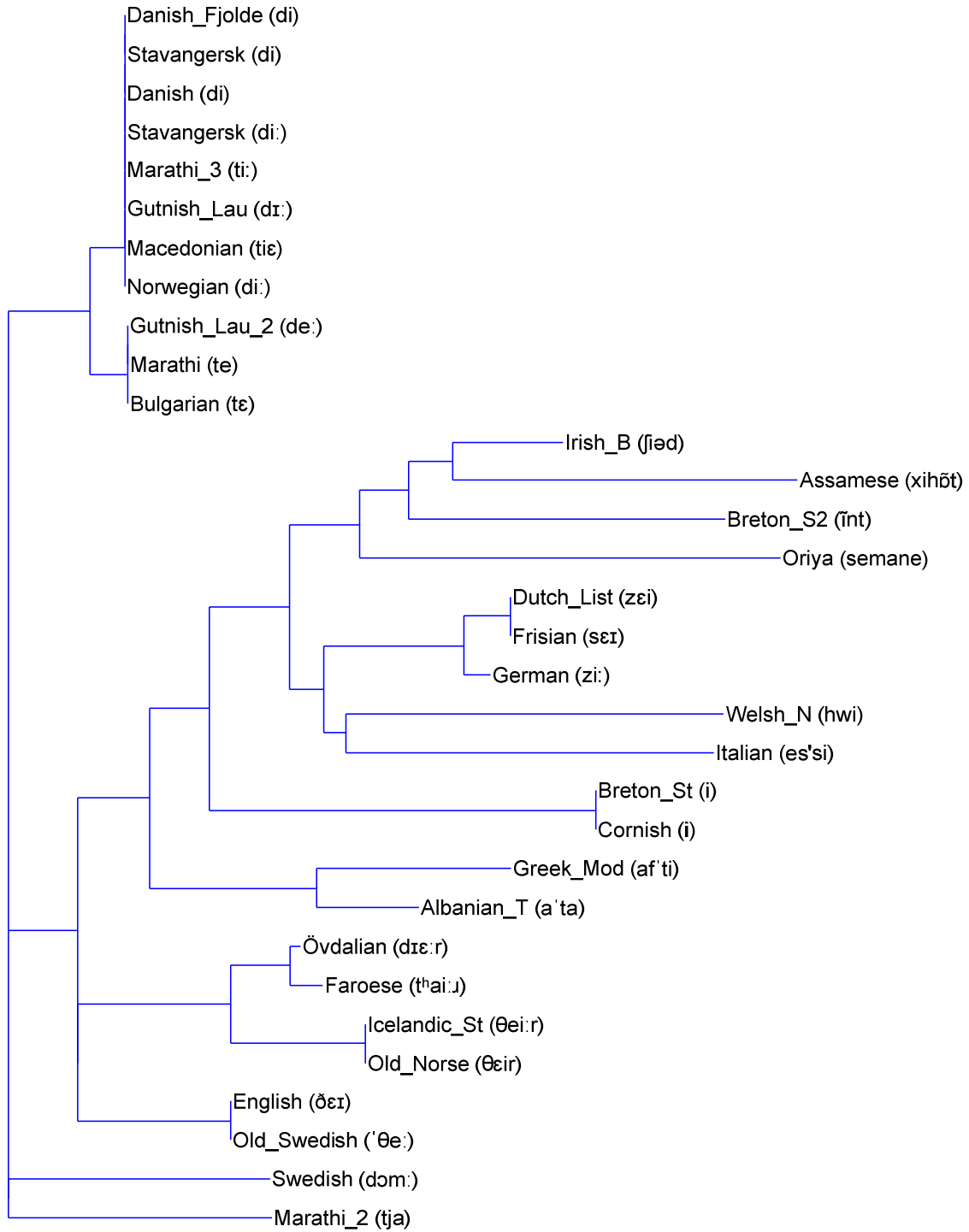
Split



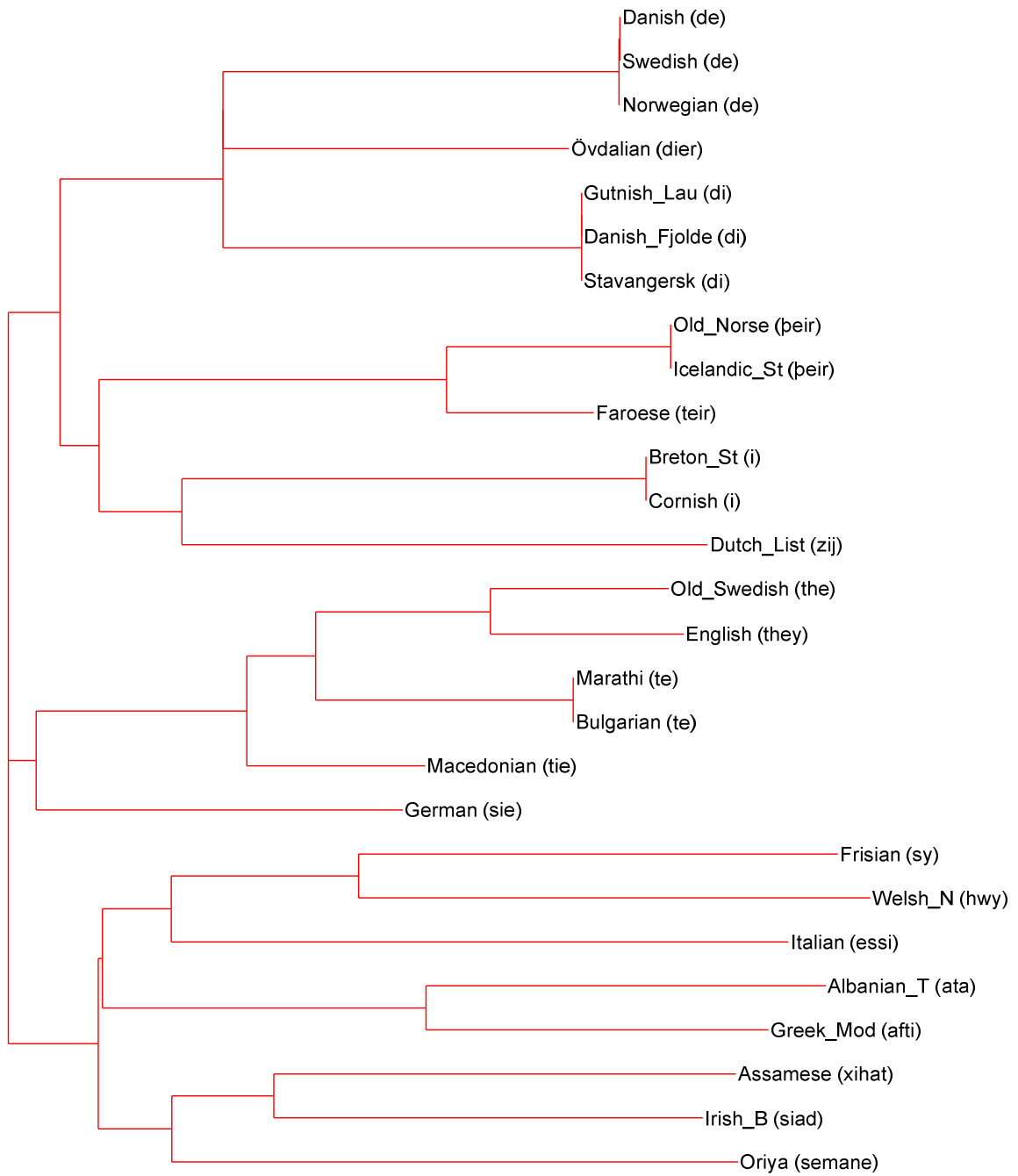
Stick



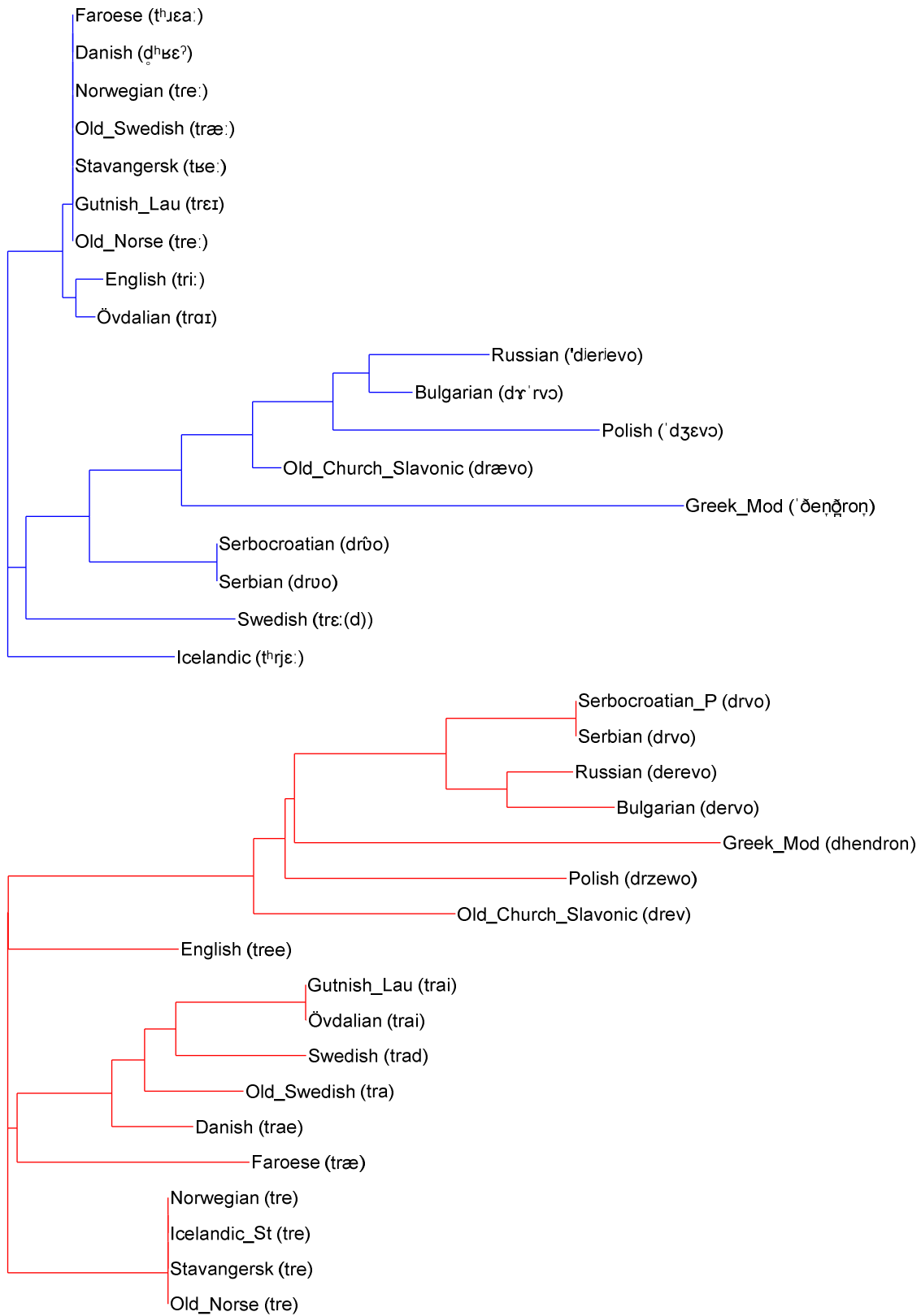
They



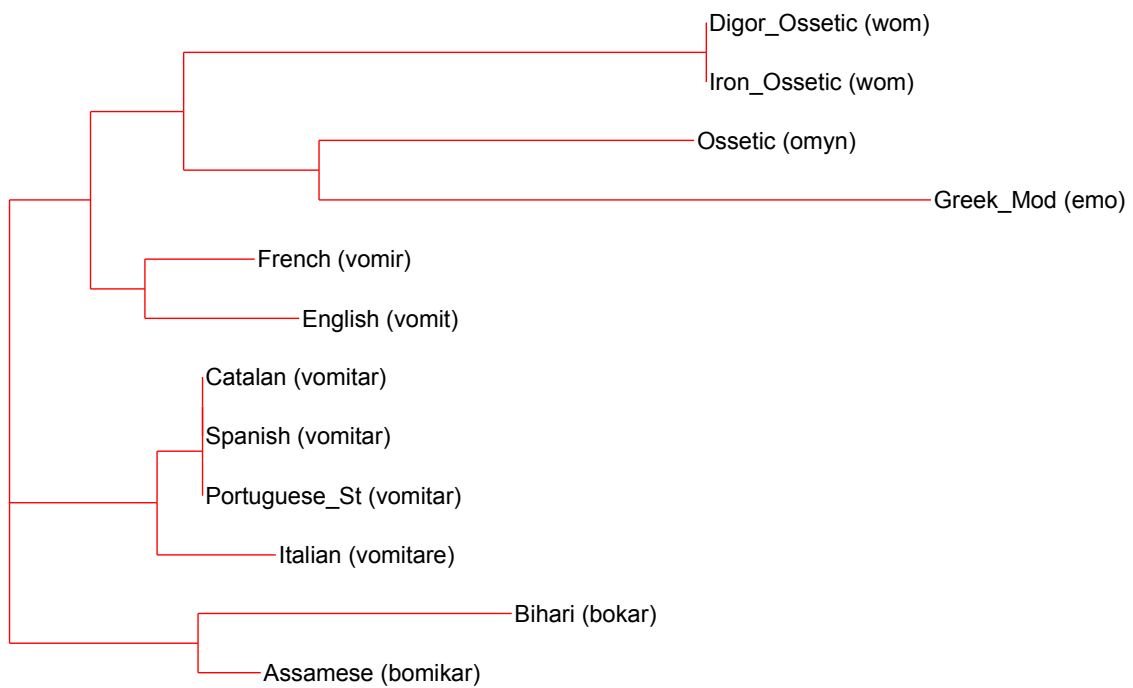
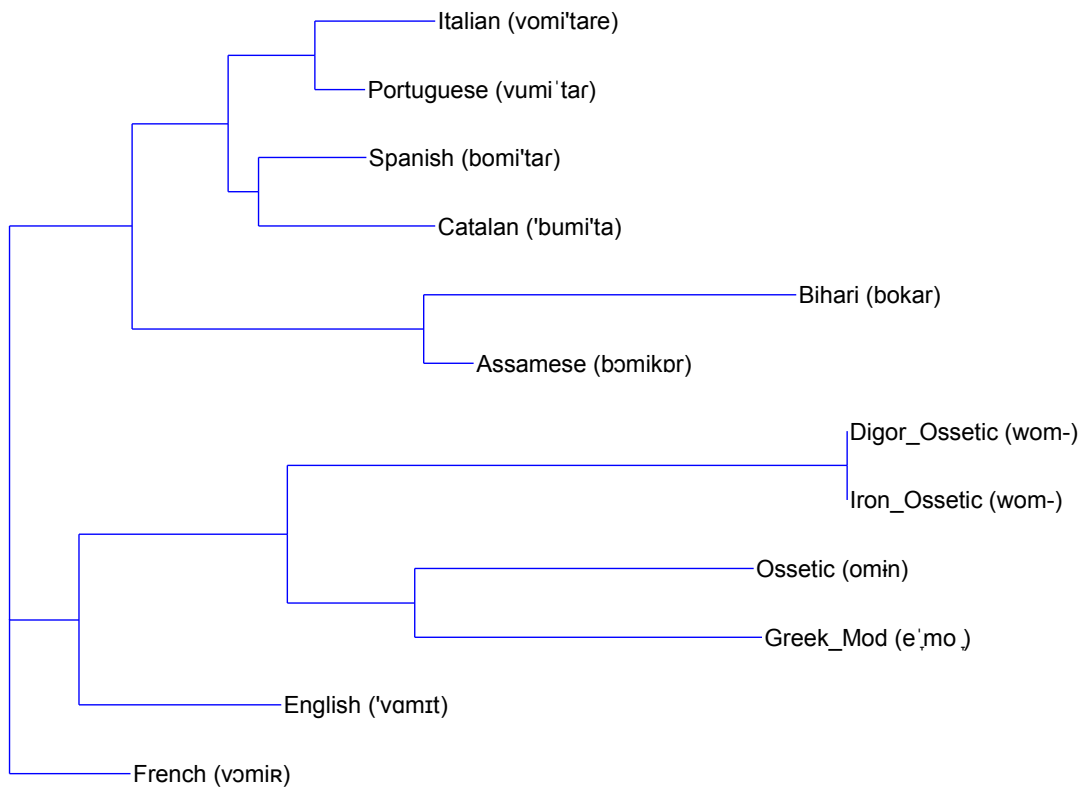
They



Tree



Vomit



Wing

